



Anchor Graphics

Editions 1990 - 2017

Anchor Graphics Editions: Published & Commissioned Prints

Mamoru Abe	1	Paul Lamantia	55
Eric Avery	1-2	Ellen Lanyon	56-57
McArthur Binion	3	Julio Larraz	57
Paola Boncinelli	4	Mike Lash	58
Andries Botha	4-5	Louise Le Bourgeois	58
Industry of the Ordinary:		Leonard Lehrer	59-61
Adam Brooks and Mat Wilson	5-7	Luba Lukova	61
Nyame Brown	8	Deborah Maris Lader	62
Steve Campbell	9-10	Kerry James Marshall	62
Alison Carey	10-12	Brenda Moore	63-64
Steven Carrelli	12	Audrey Niffenegger	64
Bill Cass	13	Rachel Niffenegger	65
Paul Catanese	13-14	Gladys Nilsson	66
Enrique Chagoya	14-15	Jim Nutt	67
Dale Chihuly	15-18	Onsmith	67
Elena Climent	18	Tom Palazzolo	68
Sue Coe	19-20	Ed Paschke	68
Paul Coffey	20	Gordon Powell	69
Don Colley	21-22	Marilyn Propp	69
Carlos Cortez	22-25	Richard Rezac	70
Julian Cox	25	Alejandro Romero	70
Courtney Davis	26	Kay Rosen	71-72
Carol Diehl	26	David Russick	72-73
Emory Douglas	27	Paul Sierra	74
Matt Dunne	27	Hollis Sigler	74
Dahlia Elsayed	28	Brian Sikes	75
Nereida Garcia Ferraz	28	Nicholas Sistler	75-87
Peter Gourfain	29	Slated Portfolio:	88-92
Michelle Grabner	29	Ed Paschke	88
Holly Greenberg	30	Tim Anderson	89
David Hartt	30	Chris Flynn	89
Steve Heyman	31	Richard Hull	90
Jessie Hickman	31-32	Michiko Itatani	90
Gregory Hilderbrand	32	Teresa James	91
John Himmelfarb	33	Ayanah Moor	91
Laurie Hogin	33-34	Marilyn Propp	92
Cannonball:		Karl Wirsum	92
Mike Houston and Martin Mazorra	35	Eleanor Spiess-Ferris	93
Richard Hull	35	Sagittas Staniunas	93
Margo Humphrey	36-38	Fred Stonehouse	94
Michiko Itatani	38-39	Tony Tasset	95
IWW Wobbly Artist, X13	40-46	Daniel Tisdale	95
IWW Wobbly Artist, CE Setzer	47	Annette Turow	96
IWW Wobbly Artist, Unknown	47-49	Lisa Villa	96
Teresa James	49-50	Hubertus von der Goltz	97-99
Luis Jiminez	50	Ian Weaver	100
Anita Jung	51	Karl Wirsum	101-102
Terry Karpowicz	51	Saya Woolfalk	102
Roland Kulla	52-55		

Artist: **Mamoru Abe**

Title: ***Imprint***

Medium: Lithograph

Size: 20 x 15"

Year: 1995

Inventory: 3 AG Proofs

Contract Project Published by the Artist



Artist: **Eric Avery**

Title: ***HIV Prisoner Woman's Story***

Medium: Woodcut and Lithograph

Size: image: 13 x 38", sheet: 15 x 39"

Year: 2007

Inventory: 8 total
5/20 - 19/20 odd #s



Published by Anchor Graphics

Artist: **Eric Avery**

Title: ***The Good Old Days (Then)***

Medium: Woodcut

Size: image: 21 x 30", sheet: 26 x 34"

Year: 2007

Inventory: 6 total
5 edition (1 - 9/10 odd #s)
1 AG Proof

Published by Anchor Graphics



Artist: **Eric Avery**

Title: ***Sars Ward (Now)***

Medium: Woodcut

Size: image: 21 x 30", sheet: 26 x 34"

Year: 2007

Inventory: 6 total
5 edition (1 - 9/10 odd #s)
1 AG Proof

Published by Anchor Graphics



Artist: **McArthur Binion**

Title: ***Driving Through Mississippi in Detroit***

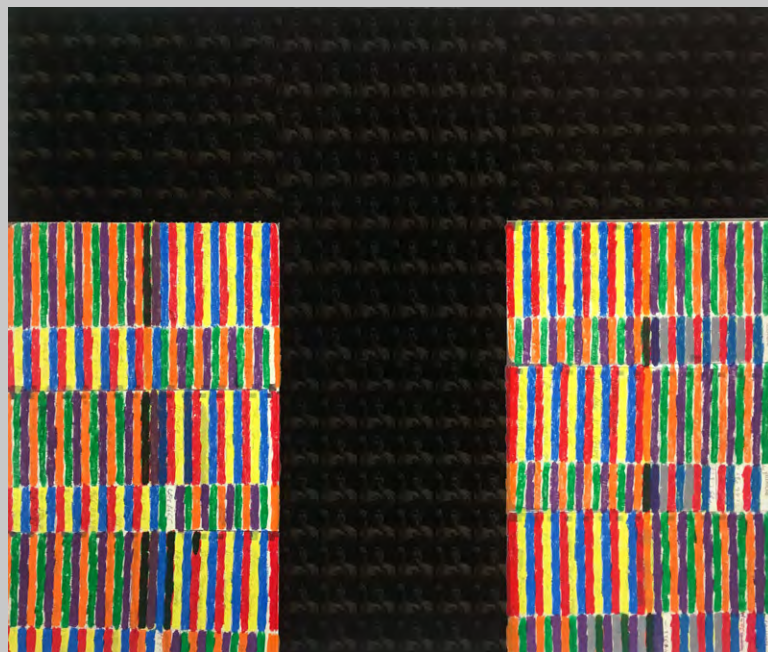
Medium: Lithograph

Size: 22 1/2 x 26 1/2"

Year: 2009

Inventory: 9 total
6 edition (8, 10, 14, 16, 18, 20/20)
2 AG Proofs

Published by Anchor Graphics
A+D Faculty Collaboration



Artist: **McArthur Binion**

Title: ***Driving Through Mississippi in Chicago***

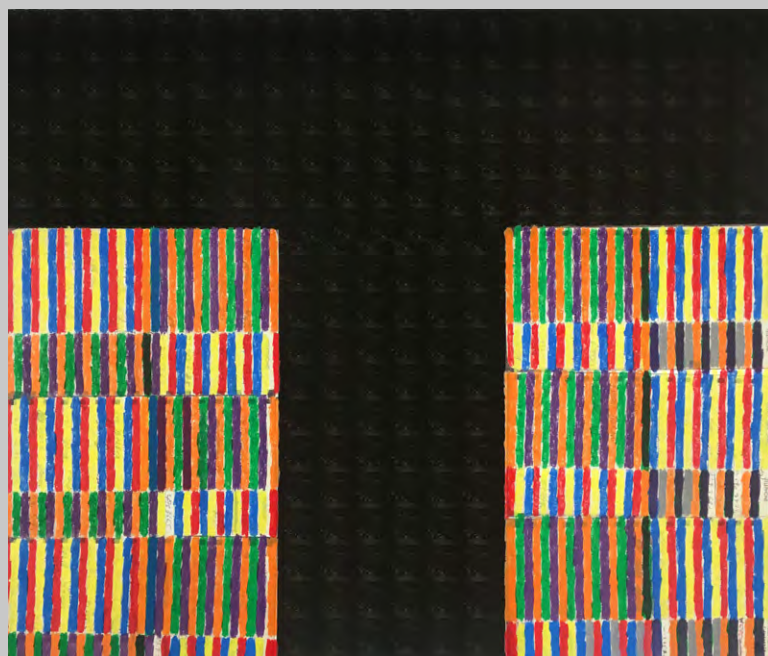
Medium: Lithograph

Size: 22 1/2 x 26 1/2"

Year: 2009

Inventory: 6 total
4 edition (14, 16, 18, 20/20)
2 AG Proofs

Published by Anchor Graphics
A+D Faculty Collaboration



Artist: **Paola Boncinelli**

Title: ***Behind the Mask***

Medium: Lithograph

Size: 22.5 x 20"

Year: 1992

Inventory: 1 AG Proof

Contract Project Published by the Artist



Artist: **Andries Botha**

Title: ***Alone: Still Life With Interior***

Medium: Lithograph

Size: image: 17.5 x 22", sheet: 22 x 27"

Year: 1998

Inventory: 3 AG Proofs

Contract Project Published by Joel Silverberg



Artist: **Andries Botha**

Title: ***Safe: Still Life With Interior***

Medium: Lithograph

Size: image: 17.5 x 22", sheet: 22 x 27"

Year: 1998

Inventory: 3 AG Proofs

Contract Project Published by Joel Silverberg



Artist: **Industry of the Ordinary:
Adam Brooks and Mat Wilson**

Title: ***Paradise of the Ordinary***

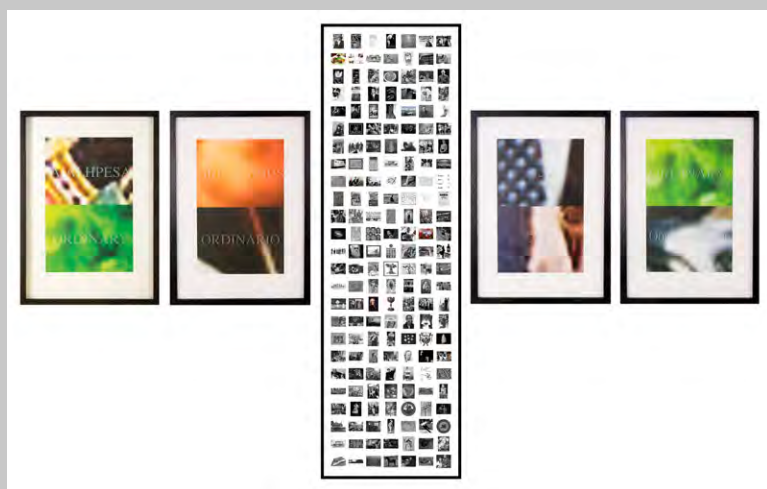
Medium: 4 Lithographs with Sandblasted Glass
and 1 Digital Print

Size: 80 x 110" (approximate total)

Year: 2011

Inventory: 25 total
1/20 - 20/20
3 AG Proofs
2 CC Proofs

Published by Anchor Graphics
A+D Faculty Collaboration
Frames and glass with sandblasted text and
digital print provided by the artists per sale.



Artist: **Industry of the Ordinary:**
Adam Brooks and Mat Wilson

Title: ***Paradise of the Ordinary (detail)***Choctaw/English

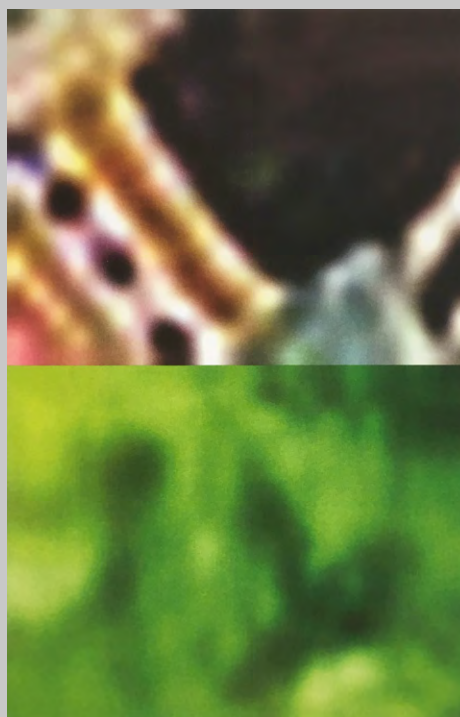
Medium: Lithograph

Size: image: 20 x 14", sheet: 27.5 x 19.75"

Year: 2011

Inventory: 25 total
1/20 - 20/20
3 AG Proofs
2 CC Proofs

Published by Anchor Graphics
A+D Faculty Collaboration



Artist: **Industry of the Ordinary:**
Adam Brooks and Mat Wilson

Title: ***Paradise of the Ordinary (detail)***Latin/Italian

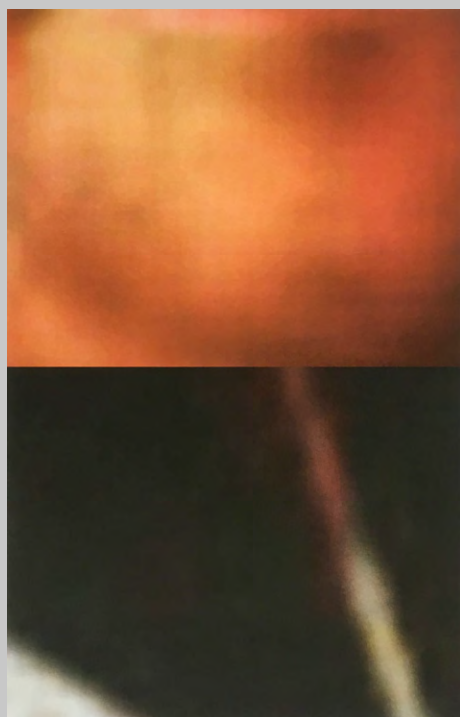
Medium: Lithograph

Size: image: 20 x 14", sheet: 27.5 x 19.75"

Year: 2011

Inventory: 25 total
1/20 - 20/20
3 AG Proofs
2 CC Proofs

Published by Anchor Graphics
A+D Faculty Collaboration



Artist: **Industry of the Ordinary:**
Adam Brooks and Mat Wilson

Title: ***Paradise of the Ordinary (detail)***
Arabic/Hebrew

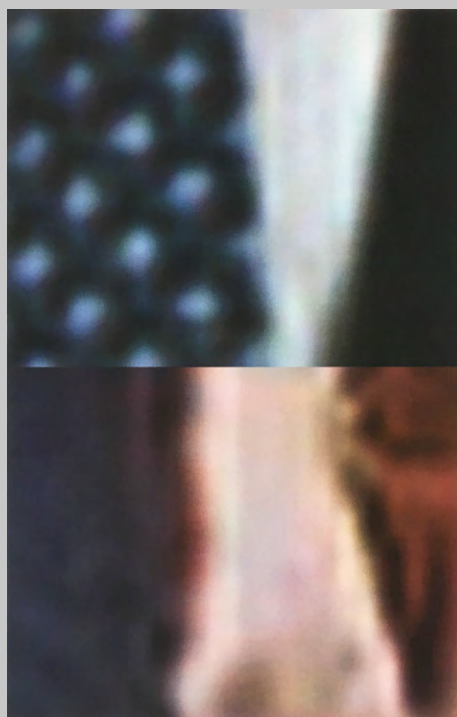
Medium: Lithograph

Size: image: 20 x 14", sheet: 27.5 x 19.75"

Year: 2011

Inventory: 25 total
1/20 - 20/20
3 AG Proofs
2 CC Proofs

Published by Anchor Graphics
A+D Faculty Collaboration



Artist: **Industry of the Ordinary:**
Adam Brooks and Mat Wilson

Title: ***Paradise of the Ordinary (detail)English/Russian***

Medium: Lithograph

Size: image: 20 x 14", sheet: 27.5 x 19.75"

Year: 2011

Inventory: 25 total
1/20 - 20/20
3 AG Proofs
2 CC Proofs

Published by Anchor Graphics
A+D Faculty Collaboration



Artist: **Nyame Brown**

Title: ***After the Cockfight II***

Medium: Lithograph

Size: 29 x 22"

Year: 1993

Inventory: 2 total
13 and 14/20

Published by Anchor Graphics



Artist: **Nyame Brown**

Title: ***Diamond Life***

Medium: Etching

Size: plate: 4 x 5", sheet: 10 x 11"

Year: 1998

Inventory: 1 Artist's Proof

Published by Anchor Graphics



Artist: **Steve Campbell**

Title: ***Conversation in Purgatory***

Medium: Lithograph

Size: image: 18.5 x 13.5", sheet: 25.25 x 19"

Year: 2000

Inventory: 13 total
11 Edition (2/30, 8/30 - 30/30, even #s)
2 AG Proofs

Published by Anchor Graphics



Artist: **Steve Campbell**

Title: ***Angel (Study/State 1)***

Medium: Lithograph

Size: image: 12 x 10", sheet: 18 x 15"

Year: 2000

Inventory: 3 total
1 Edition (8/10)
1 AG Proof
1 Trial Proof

Published by Anchor Graphics



Artist: **Steve Campbell**

Title: ***Angel***

Medium: Lithograph

Size: image: 12 x 10", sheet: 24 x 18"

Year: 2001

Inventory: 13 total
9 Edition (6/30-24/30, even #s)
3 AG Proofs
1 AP

Published by Anchor Graphics



Artist: **Allison Carey**

Title: ***Phragmoceras & Pseudocrinites,
Silurian Period, 400 - 440 MYA***

Medium: Photogravure

Size: plate: 6.25 x 15", sheet: 15 x 22"

Year: 2016

Inventory: 10 total
7 edition (2/14 - 14/14 even #s)
3 AG Proofs

Published by Anchor Graphics
Photography Faculty Collaboration



Artist: **Allison Carey**

Title: ***Criptolithus & Eumorphocystis,***
Ordovician Period, 440 - 500 MYA

Medium: Photogravure

Size: plate: 6.25 x 15", sheet: 15 x 22"

Year: 2016

Inventory: 10 total
7 edition (2/14 - 14/14 even #s)
3 AG Proofs

Published by Anchor Graphics
Photography Faculty Collaboration



Artist: **Allison Carey**

Title: ***Crinoids,***
Mississippian Period, 310 - 350 MYA

Medium: Photogravure

Size: plate: 6.25 x 15", sheet: 15 x 22"

Year: 2016

Inventory: 10 total
7 edition (2/14 - 14/14 even #s)
3 AG Proofs

Published by Anchor Graphics
Photography Faculty Collaboration



Artist: **Allison Carey**

Title: ***Stethacanthus,
Pennsylvanian Period, 280 - 310 MYA***

Medium: Photogravure

Size: plate: 6.25 x 15", sheet: 15 x 22"

Year: 2016

Inventory: 10 total
7 edition (2/14 - 14/14 even #s)
3 AG Proofs

Published by Anchor Graphics
Photography Faculty Collaboration



Artist: **Steven Carrelli**

Title: ***Weights and Burdens***

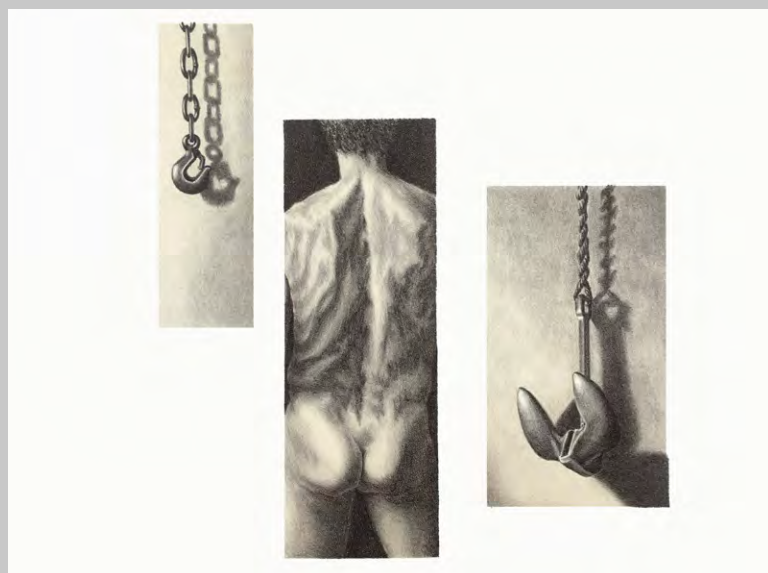
Medium: Lithograph

Size: 15 x 20.5"

Year: 2004

Inventory: 19 total
15 edition (2 - 30/30 even #s)
4 AG Proofs

Published by Anchor Graphics



Artist: **Bill Cass**

Title: ***Iconic Vase #1***

Medium: Monoprint with Etching and Woodcut

Size: plate: 21.75 x 17.5, sheet: 27.75 x 21

Year: 2004

Inventory: 1/1

Contract Project Published by The Mary and Leigh
Block Museum of Art



Artist: **Paul Catanese**

Title: ***Stones and Drones EXP 1***

Medium: Etching

Size: plate: 16 x 20", Sheet: 22 x 26"

Year: 2014

Inventory: 3 total
2 edition (2/6, 6/6)
1 AG Proofs

Published by Anchor Graphics
InterArts Faculty Collaboration



Artist: **Paul Catanese**

Title: ***Stones and Drones EXP 2***

Medium: Lithograph

Size: image: 18 x 24", sheet: 22 x 30"

Year: 2014

Inventory: 2 total (2/6, 4/6)

Published by Anchor Graphics
InterArts Faculty Collaboration



Artist: **Enrique Chagoya**

Title: ***Illegal Alien's Guide to Political Economy***

Medium: Artist's Book, Lithography

Size: 9 x 6 x 0.25"

Year: 2009

Inventory: 12 edition (34, 43, 46, 49, 52, 55, 58, 61, 64, 67, 70/75)

Published by The Robert Blackburn Workshop
Printed at Anchor Graphics for the 2009 SGCI
Conference



Artist: **Enrique Chagoya**

Title: ***The History of Surveillance***

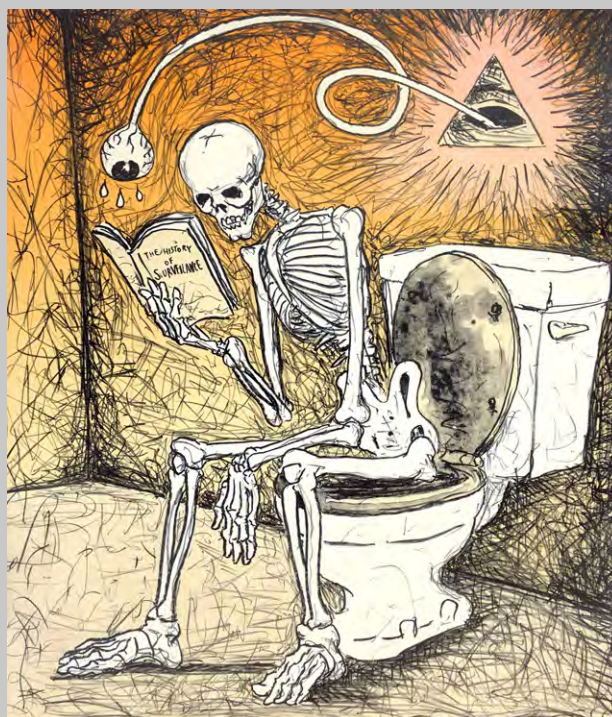
Medium: Lithograph on Handmade Paper

Size: 25.5 x 22.5"

Year: 2011

Inventory: 14 total
8 edition (6/20 - 20/20 even #s)
4 AG Proofs
2 CC Proofs

Published by Anchor Graphics
Critical Encounters 2011



Artist: **Dale Chihuly**

Title: ***Shadowed Green Ikebana***

Medium: Drypoint

Size: plate: 18 x 24, sheet: 22 x 30

Year: 2000

Inventory: 3 AG Proofs

Contract project published by Portland Press



Artist: **Dale Chihuly**

Title: ***Four Vertical Baskets***

Medium: Drypoint

Size: plate: 18 x 24, sheet: 22 x 30

Year: 2000

Inventory: SOLD OUT
(No viewing copies available)

Contract project published by Portland Press



Artist: **Dale Chihuly**

Title: ***Seven Ikebana***

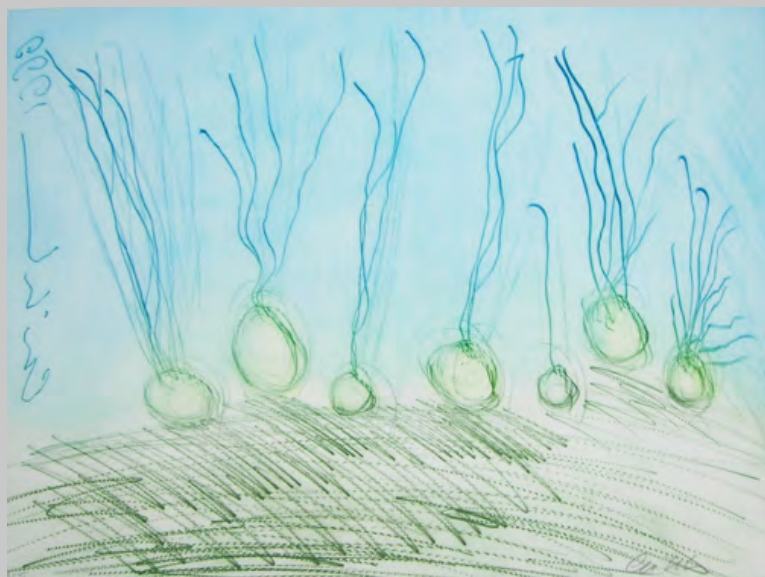
Medium: Drypoint

Size: plate: 18 x 24, sheet: 22 x 30

Year: 2000

Inventory: 3 AG Proofs

Contract project published by Portland Press



Artist: **Dale Chihuly**

Title: ***Basket Rows***

Medium: Drypoint

Size: plate: 18 x 24, sheet: 22 x 30

Year: 2000

Inventory: 1 AG Proof

Contract project published by Portland Press



Artist: **Dale Chihuly**

Title: ***Floating Baskets***

Medium: Drypoint

Size: plate: 18 x 24, sheet: 22 x 30

Year: 2000

Inventory: 2 AG Proofs

Contract project published by Portland Press



Artist: **Dale Chihuly**

Title: ***Blue Baskets***

Medium: Drypoint

Size: plate: 18 x 24, sheet: 22 x 30

Year: 2000

Inventory: SOLD OUT
(No viewing copies available)

Contract project published by Portland Press



Artist: **Elena Climent**

Title: ***Mesa de Mosaicos con Objetos***

Medium: Lithograph

Size: image: 18 x 24", sheet: 22 x 30"

Year: 1997

Inventory: 2 AG Proofs

Contract Project Published by the Artist



Artist: **Sue Coe**

Title: ***Death of Jumbo***

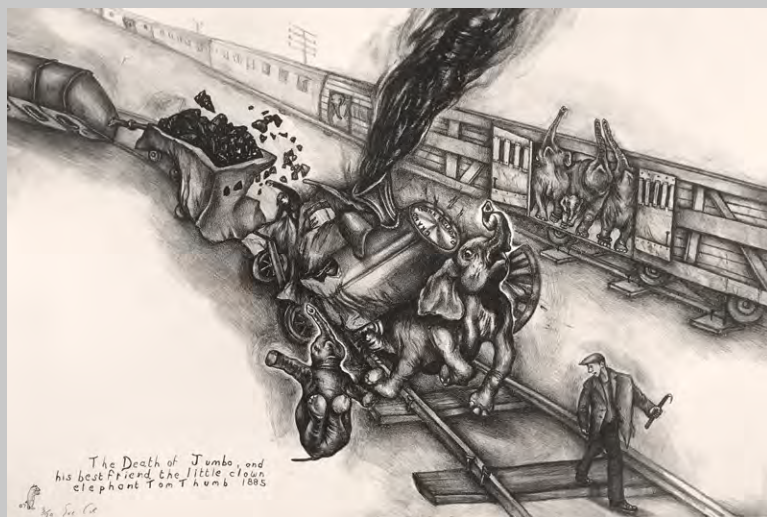
Medium: Lithograph

Size: 15 x 22"

Year: 2008

Inventory: 10 total
9 edition (3/20 - 19/20 odd #s)
1 AG Proof

Published by Anchor Graphics
Critical Encounters Visiting Artist 2008



Artist: **Sue Coe**

Title: ***Circus Elephant Backstage***

Medium: Lithograph

Size: image: 9.5 x 12.25, sheet: 15 x 19"

Year: 2008

Inventory: 11 total
8 edition (3/20 - 17/20 odd #s)
3 AG Proofs

Published by Anchor Graphics
Critical Encounters Visiting Artist 2008



Artist: **Sue Coe**

Title: ***Who Killed the Harrier?***

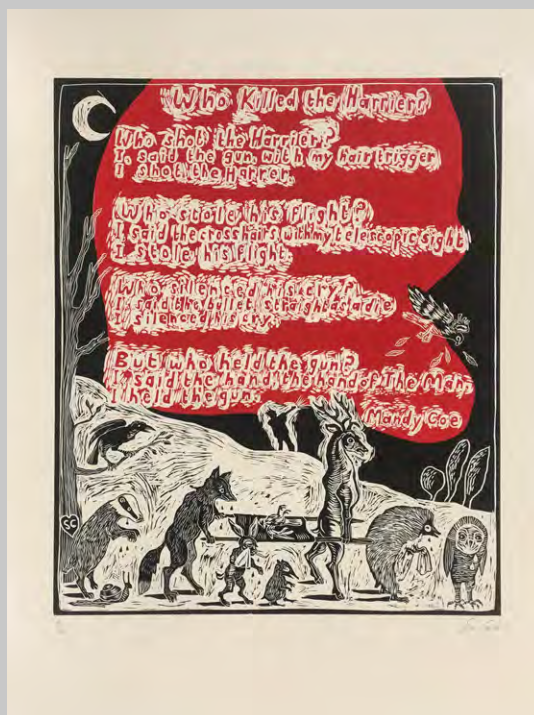
Medium: Woodcut

Size: block: 20 x 23.75", sheet: 24 x 32"

Year: 2008

Inventory: 11 total
9 edition (3/20 - 20/20 odd #s)
2 AG Proofs

Published by Anchor Graphics
Critical Encounters Visiting Artist 2008



Artist: **Paul Coffey**

Title: ***A Place in The Weed Garden***

Medium: Lithograph with Blind Embossment

Size: image: 8.5 x 8.5", sheet: 20.5 x 15"

Year: 1996

Inventory: 4 AG Proofs

Contract Project Published by the Artist



Artist: **Don Colley**

Title: **Sense**

Medium: Lithograph

Size: 15 x 20"

Year: 2010

Inventory: 12 total
7 edition (8/20 - 20/20 even #s)
4 AG Proofs
1 CC proof

Published by Anchor Graphics



Artist: **Don Colley**

Title: **Juego de Azar**

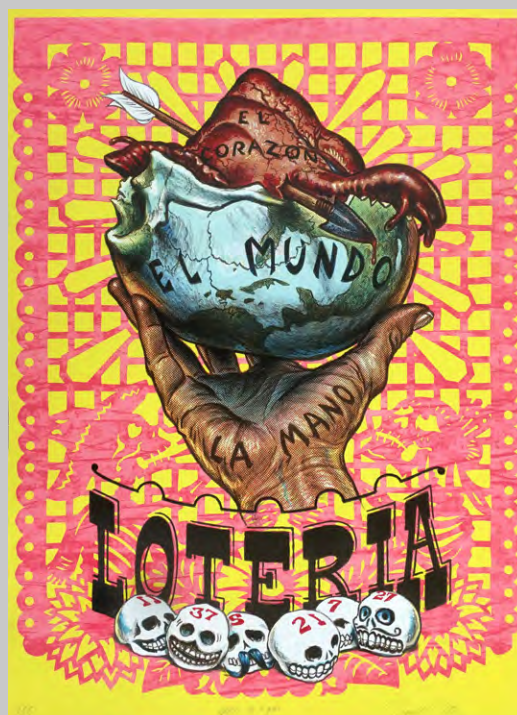
Medium: Lithograph

Size: 15 x 20.25"

Year: 2010

Inventory: 2 CC Proofs

Published by Anchor Graphics and The Center for Book & Paper Arts for "Mano, Mundo, Corazon: Artists Interpret Loteria Exhibit 2010"



Artist: **Don Colley**

Title: ***Pachy Slapped***

Medium: Lithograph

Size: 15 x 21.5"

Year: 2014

Inventory: 15 total
9 edition (4/20 - 20/20 even #s)
5 AG Proofs
1 Artist's Proof

Published by Anchor Graphics



Artist: **Carlos Cortez**

Title: ***Draftees of the World Unite!***

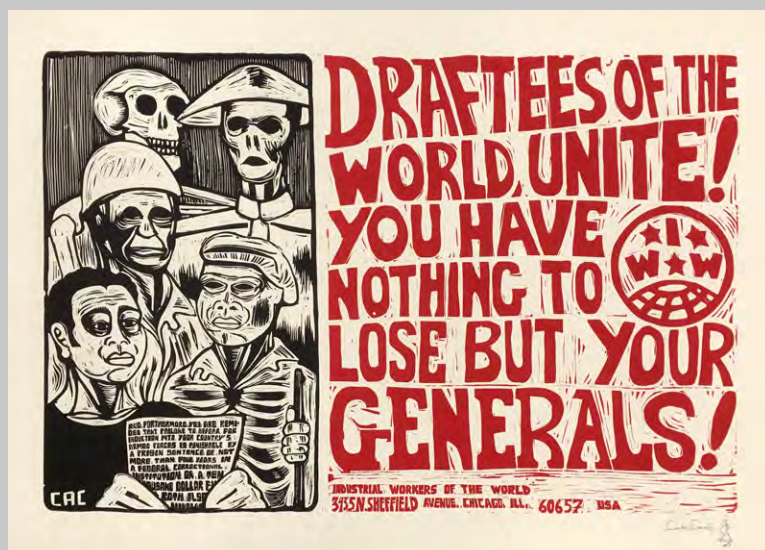
Medium: Linoleum Cut

Size: block: 24 x 19.5", sheet: 28 x 24"

Year: 1965/2003

Inventory: 1 AG Proof

Contract Project Published by The National
Museum of Mexican Art, Chicago, 2003



Artist: **Carlos Cortez**

Title: ***Tlazolteotl***

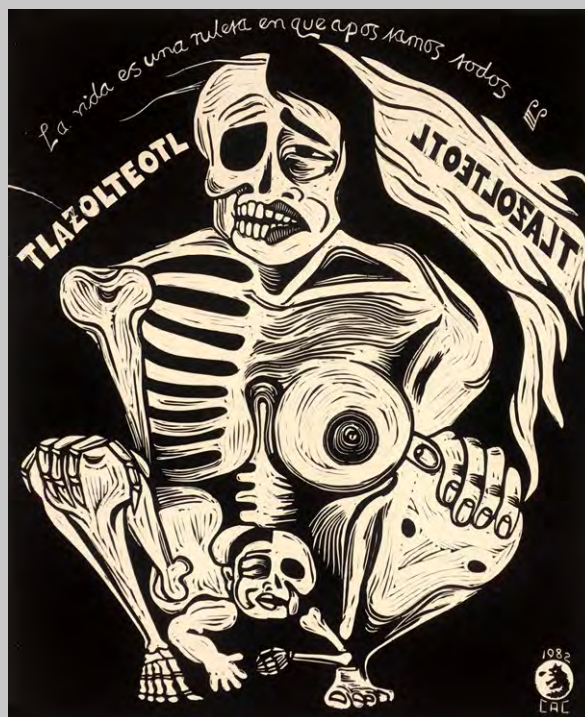
Medium: Linoleum Cut

Size: block: 24 x 19.5", sheet: 28 x 24"

Year: 1982/2003

Inventory: 1 AG Proof

Contract Project Published by The National
Museum of Mexican Art, Chicago, 2003



Artist: **Carlos Cortez**

Title: ***La Catrina***

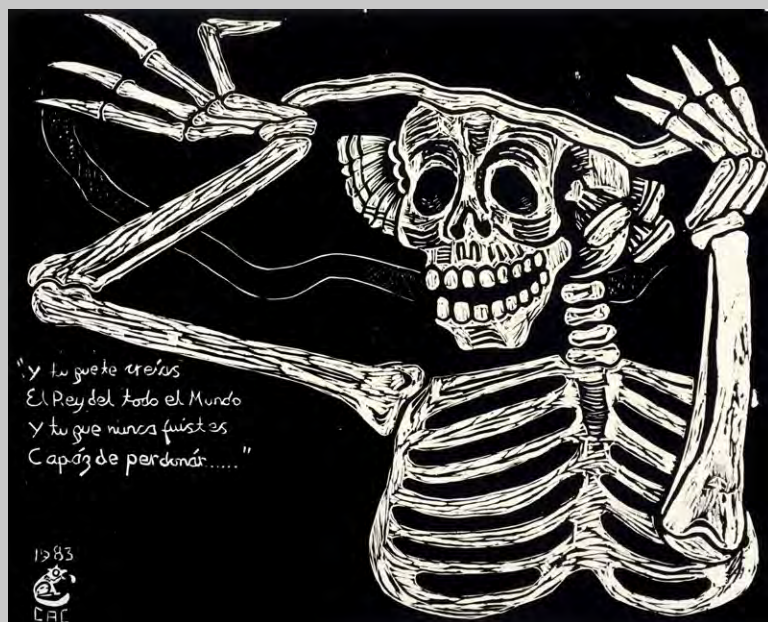
Medium: Woodcut

Size: block: 24.5 x 30.5", sheet: 26.5 x 32"

Year: 1983/2003

Inventory: 2 AG Proofs

Contract Project Published by The National
Museum of Mexican Art, Chicago, 2003



Artist: **Carlos Cortez**

Title: ***Mariachi Calavera***

Medium: Woodcut

Size: block: 24.5 x 30.5", sheet: 26.5 x 32"

Year: 1984/2003

Inventory: 3 AG Proofs

Contract Project Published by The National
Museum of Mexican Art, Chicago, 2003



Artist: **Carlos Cortez**

Title: ***Policia***

Medium: Woodcut

Size: block: 36 x 17.5", sheet: 40 x 21.5"

Year: 1989/2003

Inventory: 2 AG Proofs

Contract Project Published by The National
Museum of Mexican Art, Chicago, 2003



Artist: **Carlos Cortez**

Title: ***Otomi, You Are Lovely***

Medium: Woodcut

Size: block: 32 x 24", sheet: 36 x 26.5"

Year: 1989/2003

Inventory: 2 AG Proofs

Contract Project Published by The National
Museum of Mexican Art, Chicago, 2003



Artist: **Julian Cox**

Title: ***Flights of Fancy***

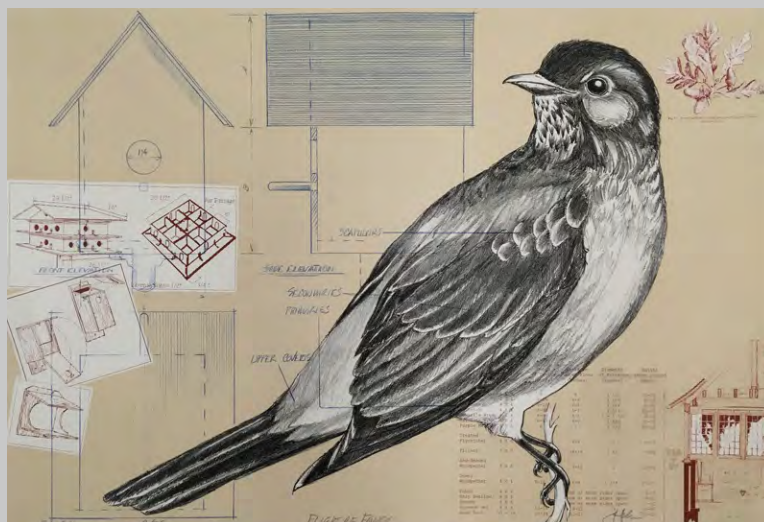
Medium: Lithograph

Size: 15 x 22"

Year: 2004

Inventory: 27 total
21 edition (4/25 - 25/25)
3 AG Proofs
3 Artist's Proofs

Published by Anchor Graphics



Artist: **Courtney Davis**

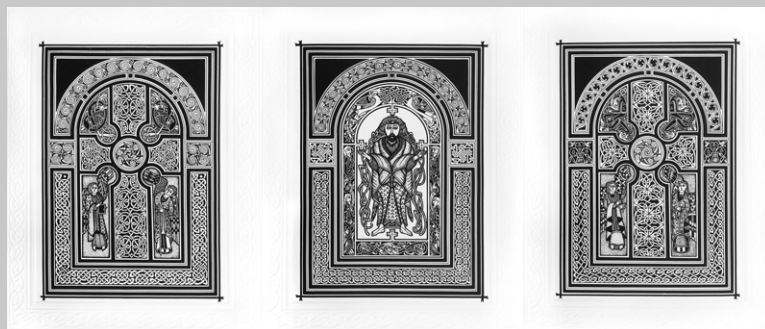
Title: ***Celtic Crosses***

Medium: Lithographs with Blind Embossment

Size: images: 16.25 x 12.5", sheets: 19.75 x 14.75

Year: 1996

Inventory: 2 unsigned AG Proofs



Contract Project Published by the Artist

Artist: **Carol Diehl**

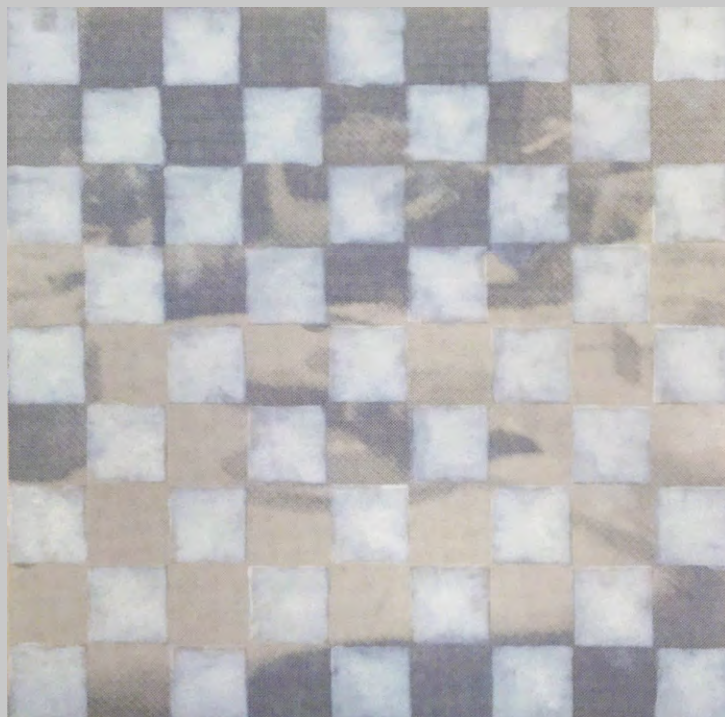
Title: ***Restaurant***

Medium: Lithograph and Monotype

Size: 22.5 x 23

Year: 2004

Inventory: 7 total (variable edition)



Published by Anchor Graphics
A+D Visiting Artist 2004

Artist: **Emory Douglas**

Title: *untitled*

Medium: Silkscreen

Size: 15 x 20.25"

Year: 2009

Inventory: SOLD OUT

Published by Anchor Graphics
Lecture Series Visiting Artist 2009



Artist: **Matt Dunne**

Title: *In Flight*

Medium: Lithograph

Size: 15 x 20"

Year: 2015

Inventory: 2 Printer's Proofs

Project with Manifest Student Art Director 2015
Edition available through Shop Columbia



Artist: **Dahlia Elsayed**

Title: ***The Volcano Route***

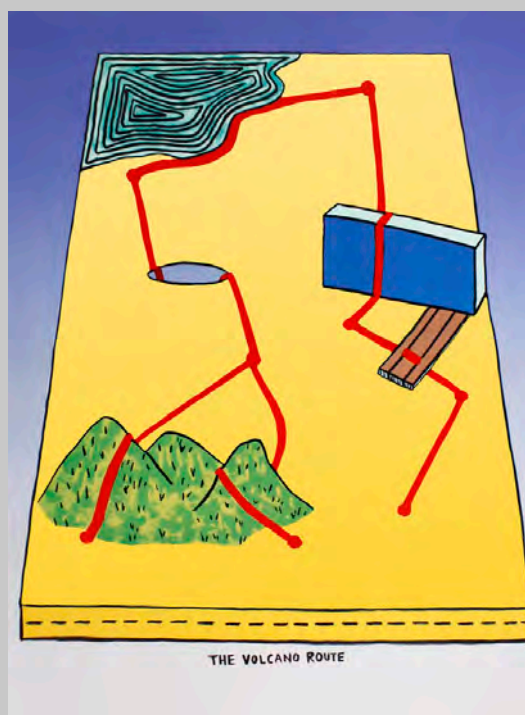
Medium: Lithograph

Size: 15 x 20"

Year: 2015

Inventory: 13 total
10 edition (2/20 - 20/20, even #s)
3 AG Proofs

Published by Anchor Graphics
InterArts Visiting Artist 2015



Artist: **Nerelda Garcia Ferraz**

Title: ***Casi Nunca Viejado***

Medium: Lithograph

Size: 15 x 20.75"

Year: 1996

Inventory: 14 total
10 edition (6, 8, 14, 22, 32, 34, 38, 42, 44, 46)
4 AG Proofs

Published by Anchor Graphics



Artist: **Peter Gourfain**

Title: ***The Seafarer***

Medium: Etching

Size: plate: 4 x 5", sheet: 10 x 11"

Year: 1998

Inventory: 3 total
3, 4, 5/10

Published by Anchor Graphics



Artist: **Michelle Grabner**

Title: ***Untitled (COD)***

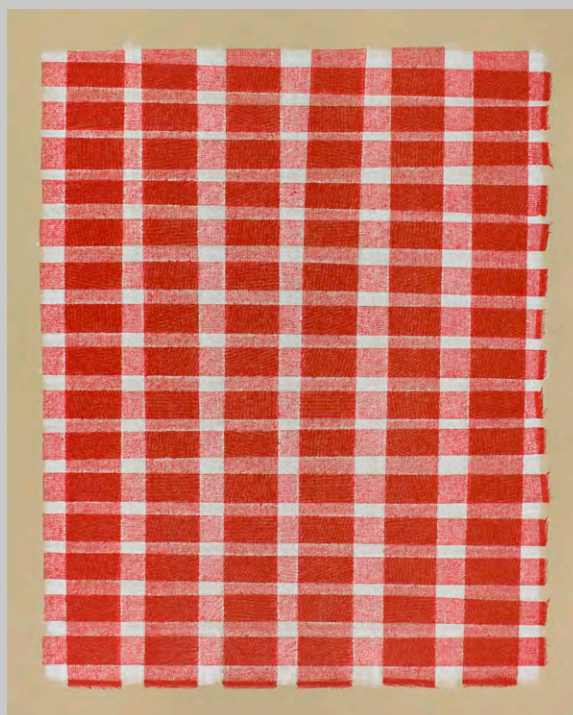
Medium: Lithograph

Size: image: 24 x 19", sheet: 27 x 22"

Year: 2017

Inventory: 4 AG Proofs

Contract Project Published by The Cleve Carney
Gallery at The College of Dupage



Artist: **Holly Greenberg**

Title: ***Bashful Bride***

Medium: Collage

Size: image: 4 x 5", sheet: 10 x 11"

Year: 1998

Inventory: 1

Donated by the Artist



Artist: **David Hartt**

Title: ***Courier***

Medium: Photogravure

Size: plate: 10.5 x 14", sheet: 20 x 22.25"

Year: 2013

Inventory: 2 AG proofs

Contract Project Published by Three Walls



Artist: **Steve Heyman**

Title: ***Untitled***

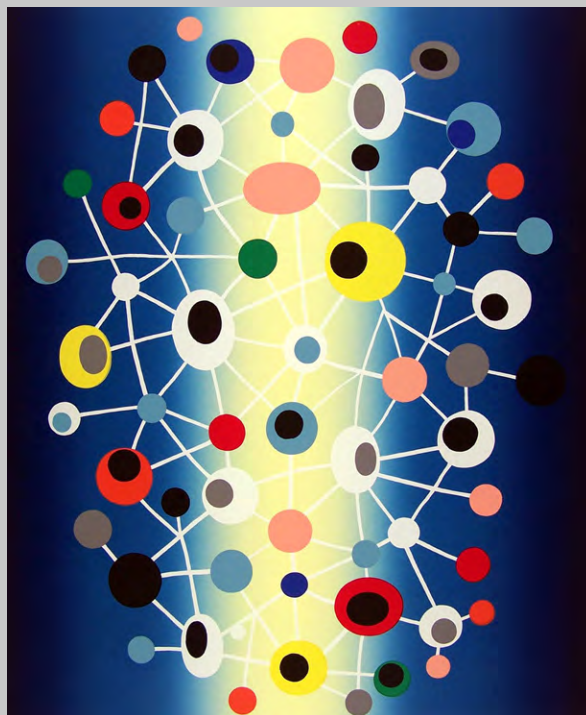
Medium: Silkscreen and Lithography

Size: image: 22 x 18", sheet: 27 x 22.5"

Year: 2002

Inventory: 5 total
3 AG Proofs
2 Trial Proofs

Contract Project Published by Chicago Department
of Cultural Affairs



Artist: **Jessie Hickman**

Title: ***Shelton***

Medium: Relief

Size: 11 x 13"

Year: 1991

Inventory: 2 AG Proofs

Contract Project Published by the Artist



Artist: **Jessie Hickman**

Title: ***Irving***

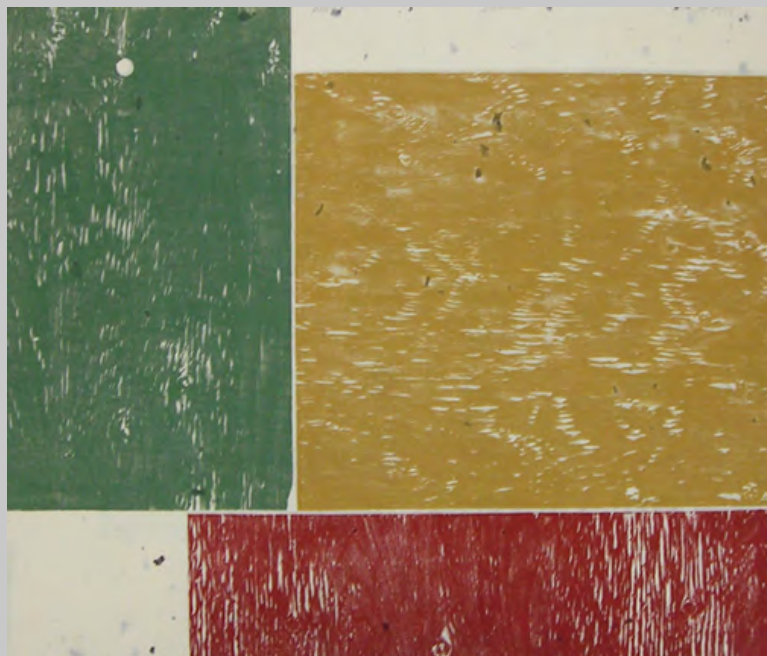
Medium: Relief

Size: 23.5 x 27.75

Year: 1991

Inventory: SOLD OUT
No Viewing Impressions Available

Contract Project Published by the Artist



Artist: **Gregory Hilderbrand**

Title: ***Waitin***

Medium: Lithograph

Size: 22 x 30"

Year: 1991

Inventory: 3 AG Proofs

Contract Project Published by the Artist



Artist: **John Himmelfarb**

Title: ***Mirrorim***

Medium: Lithograph

Size: 19.75 x 41.25"

Year: 1991

Inventory: SOLD OUT



Contract Project Published by the Artist

Artist: **Laurie Hogin**

Title: ***The Chicago Portraits: Head of a Denizen***

Medium: Etching with Chine Colle

Size: plate: 6 x 9", sheet: 13 x 18"

Year: 2008

Inventory: 10 total
6 edition (10/20 - 20/20 even #s)
4 AG Proofs



Published by Anchor Graphics
Price for full triptych: 2700

Artist: **Laurie Hogin**

Title: ***The Chicago Portraits: Head of a Sybil***

Medium: Etching with Chine Colle

Size: plate: 6 x 9", sheet: 13 x 18"

Year: 2008

Inventory: 11 total
7 edition (4/20, 10/20 - 20/20 even #s)
4 AG Proofs

Published by Anchor Graphics
Price for full triptych: 2700



Artist: **Laurie Hogin**

Title: ***The Chicago Portraits: Head of an Official***

Medium: Etching with Chine Colle

Size: plate: 6 x 9", sheet: 13 x 18"

Year: 2008

Inventory: 11 total
7 edition (4/20, 10/20 - 20/20 even #s)
4 AG Proofs

Published by Anchor Graphics
Price for full triptych: 2700



Artist: **Cannonball: Mike Houston and Martin Mazorra**

Title: ***Age of Unreason***

Medium: Lithograph

Size: 22 x 30

Year: 2012

Inventory: 16 total
10 edition (1, 4, 7, 10, 13, 16, 19, 22, 25, 28/30)
4 AG Proofs
2 CC Proofs

Published by Anchor Graphics during A+D Gallery exhibit 2012



Artist: **Richard Hull**

Title: ***Echo***

Medium: Lithograph

Size: image: 14 x 20", sheet: 18 x 24"

Year: 1999

Inventory: 14 total
8 Edition (12/30-28/30, even #s)
6 AG Proofs

Published by Anchor Graphics



Artist: **Margo Humphrey**

Title: ***Tribute to Rahsaan Roland Kirk - Bright Moments***

Medium: Lithograph

Size: 11 x 14"

Year: 2008

Inventory: 10 total
7 edition (8/20 - 20/20 even #s)
3 AG Proofs

Published by Anchor Graphics



Artist: **Margo Humphrey**

Title: ***Tribute to Rahsaan Roland Kirk - The Double Cross***

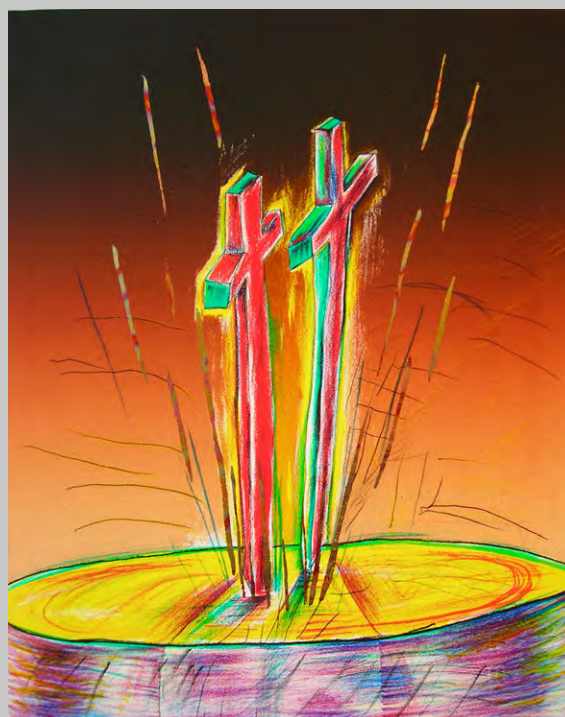
Medium: Lithograph

Size: 11 x 14"

Year: 2008

Inventory: 11 total
8 edition (6/20 - 20/20 even #s)
3 AG Proofs

Published by Anchor Graphics



Artist: **Margo Humphrey**

Title: ***Tribute to Rahsaan Roland Kirk - Crossing Over***

Medium: Lithograph

Size: 11 x 14"

Year: 2008

Inventory: 11 total
8 edition (6/20 - 20/20 even #s)
3 AG Proofs

Published by Anchor Graphics



Artist: **Margo Humphrey**

Title: ***Tribute to Rahsaan Roland Kirk - All Crossed Up***

Medium: Lithograph

Size: 11 x 14"

Year: 2008

Inventory: 10 total
7 edition (6/20,10/20 - 20/20 even #s)
3 AG Proofs

Published by Anchor Graphics



Artist: **Margo Humphrey**

Title: ***Fear Not, I've Got You***

Medium: Lithograph

Size: 22 x 28"

Year: 2012

Inventory: 3 total
1 AG Proof
2 CC Proofs

Published by Anchor Graphics
Columbia Multiples



Artist: **Michiko Itatani**

Title: ***Untitled, from Childhood's End***

Medium: Lithograph

Size: 15 x 20.5"

Year: 1994

Inventory: 10 total
7 edition (22, 34 - 44/50 even #s)
3 AG Proofs

Published by Anchor Graphics



Artist: **Michiko Itatani**

Title: ***untitled***

Medium: Etching

Size: plate: 4 x 5", sheet: 10 x 11"

Year: 1998

Inventory: SOLD OUT
(No viewing copies available)

Published by Anchor Graphics



Artist: **Michiko Itatani**

Title: ***Cosmic Night***

Medium: Monoprint

Size: 30 x 22"

Year: 2004

Inventory: 3 Variations

Contract Project Published by The Mary and Leigh
Block Museum of Art



Artist: **IWW Wobbly Artist, X13**

Title: ***Big Union Blitzkrieg!***

Medium: Relief

Size: block: 6.5 x 6", sheet: 10 x 10.5"

Year: block ca. 1940, restrike 1991

Inventory: 4 total
1,5,6,7/10

IWW Wobbly Blocks from the collection of Carlos Cortez re-printed for Rebel Graphics: IWW Prints from the 1940s, exhibit at Anchor Graphics, 1991.



Artist: **IWW Wobbly Artist, X13**

Title: ***Capitalism***

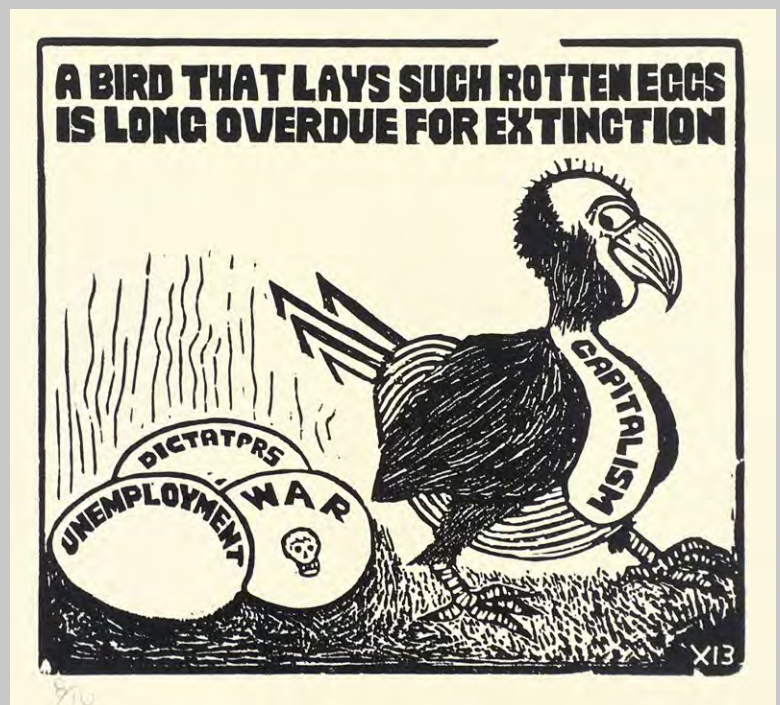
Medium: Relief

Size: block: 6.5 x 6", sheet: 10 x 10.5"

Year: block ca. 1940, restrike 1991

Inventory: 8/10

IWW Wobbly Blocks from the collection of Carlos Cortez re-printed for Rebel Graphics: IWW Prints from the 1940s, exhibit at Anchor Graphics, 1991.



Artist: **IWW Wobbly Artist, X13**

Title: ***Capitalism's Cure-All***

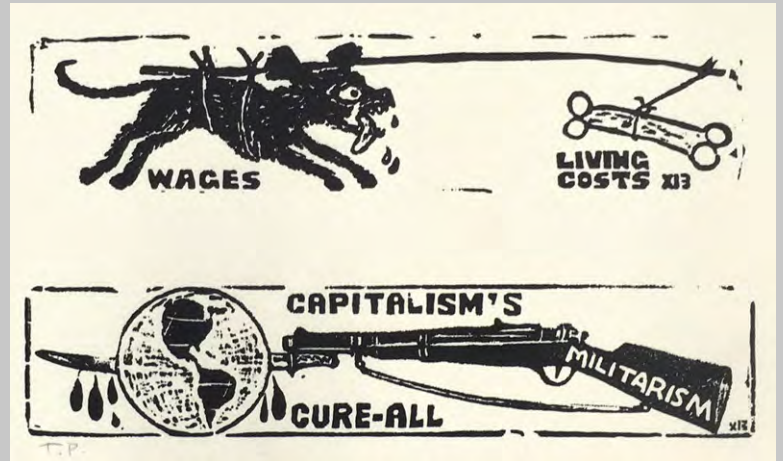
Medium: Relief

Size: block: 3.25 x 6", sheet: 7.5 x 10"

Year: block ca. 1940, restrike 1991

Inventory: 1 Trial Proof

IWW Wobbly Blocks from the collection of Carlos Cortez re-printed for Rebel Graphics: IWW Prints from the 1940s, exhibit at Anchor Graphics, 1991.



Artist: **IWW Wobbly Artist, X13**

Title: ***Production***

Medium: Relief

Size: block: 6.5 x 6", sheet: 10 x 10.5"

Year: block ca. 1940, restrike 1991

Inventory: 7/10

IWW Wobbly Blocks from the collection of Carlos Cortez re-printed for Rebel Graphics: IWW Prints from the 1940s, exhibit at Anchor Graphics, 1991.



Artist: **IWW Wobbly Artist, X13**

Title: ***Industrial Efficiency***

Medium: Relief

Size: block: 6.5 x 6", sheet: 10 x 10.5"

Year: block ca. 1940, restrike 1991

Inventory: 2 total
7/10
1 Trial Proof

IWW Wobbly Blocks from the collection of Carlos Cortez re-printed for Rebel Graphics: IWW Prints from the 1940s, exhibit at Anchor Graphics, 1991.



Artist: **IWW Wobbly Artist, X13**

Title: ***Industry Worker***

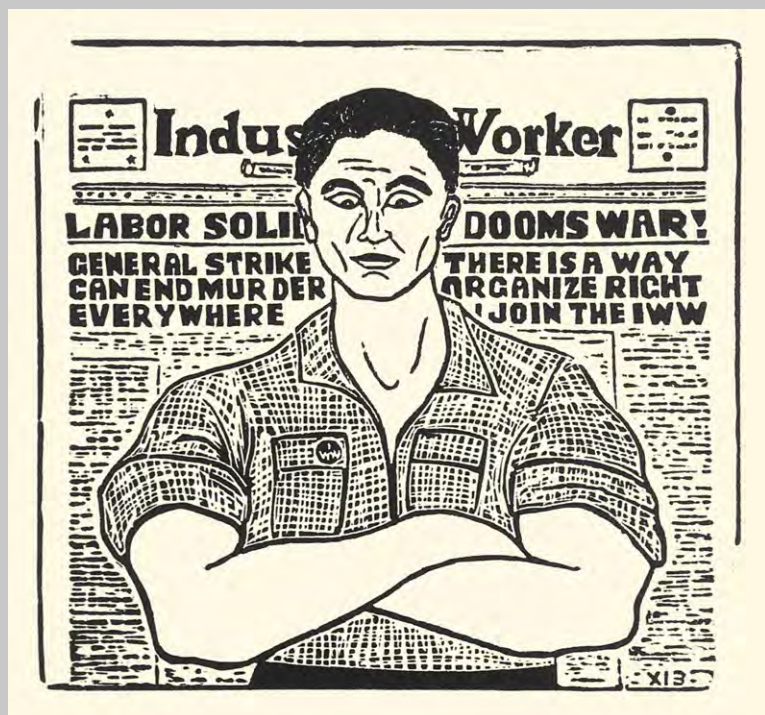
Medium: Relief

Size: block: 6.5 x 6", sheet: 10 x 10.5"

Year: block ca. 1940, restrike 1991

Inventory: 10/10

IWW Wobbly Blocks from the collection of Carlos Cortez re-printed for Rebel Graphics: IWW Prints from the 1940s, exhibit at Anchor Graphics, 1991.



Artist: **IWW Wobbly Artist, X13**

Title: ***Labor***

Medium: Relief

Size: block: 6.5 x 6", sheet: 10 x 10.5"

Year: block ca. 1940, restrike 1991

Inventory: 4 Total
1, 2, 7, 8/10

IWW Wobbly Blocks from the collection of Carlos Cortez re-printed for Rebel Graphics: IWW Prints from the 1940s, exhibit at Anchor Graphics, 1991.



Artist: **IWW Wobbly Artist, X13**

Title: ***Living Costs***

Medium: Relief

Size: block: 6.5 x 6", sheet: 10 x 10.5"

Year: block ca. 1940, restrike 1991

Inventory: 3 Total
5, 7, 8/10

IWW Wobbly Blocks from the collection of Carlos Cortez re-printed for Rebel Graphics: IWW Prints from the 1940s, exhibit at Anchor Graphics, 1991.



Artist: **IWW Wobbly Artist, X13**

Title: ***The Old Squeeze***

Medium: Relief

Size: block: 6.5 x 6", sheet: 10 x 10.5"

Year: block ca. 1940, restrike 1991

Inventory: 4 Total
1, 5, 6, 10/10

IWW Wobbly Blocks from the collection of Carlos Cortez re-printed for Rebel Graphics: IWW Prints from the 1940s, exhibit at Anchor Graphics, 1991.



Artist: **IWW Wobbly Artist, X13**

Title: ***Phew!***

Medium: Relief

Size: block: 6.5 x 6", sheet: 10 x 10.5"

Year: block ca. 1940, restrike 1991

Inventory: 3 Total
1, 5, 8/10

IWW Wobbly Blocks from the collection of Carlos Cortez re-printed for Rebel Graphics: IWW Prints from the 1940s, exhibit at Anchor Graphics, 1991.



Artist: **IWW Wobbly Artist, X13**

Title: ***Race Hatred***

Medium: Relief

Size: block: 6.5 x 6", sheet: 10 x 10.5"

Year: block ca. 1940, restrike 1991

Inventory: 2 Total
1, 2/10

IWW Wobbly Blocks from the collection of Carlos Cortez re-printed for Rebel Graphics: IWW Prints from the 1940s, exhibit at Anchor Graphics, 1991.



Artist: **IWW Wobbly Artist, X13**

Title: ***U.S. Youth***

Medium: Relief

Size: block: 6 x 4", sheet: 8.5 x 6"

Year: block ca. 1940, restrike 1991

Inventory: 1/10

IWW Wobbly Blocks from the collection of Carlos Cortez re-printed for Rebel Graphics: IWW Prints from the 1940s, exhibit at Anchor Graphics, 1991.



Artist: **IWW Wobbly Artist, X13**

Title: **War News**

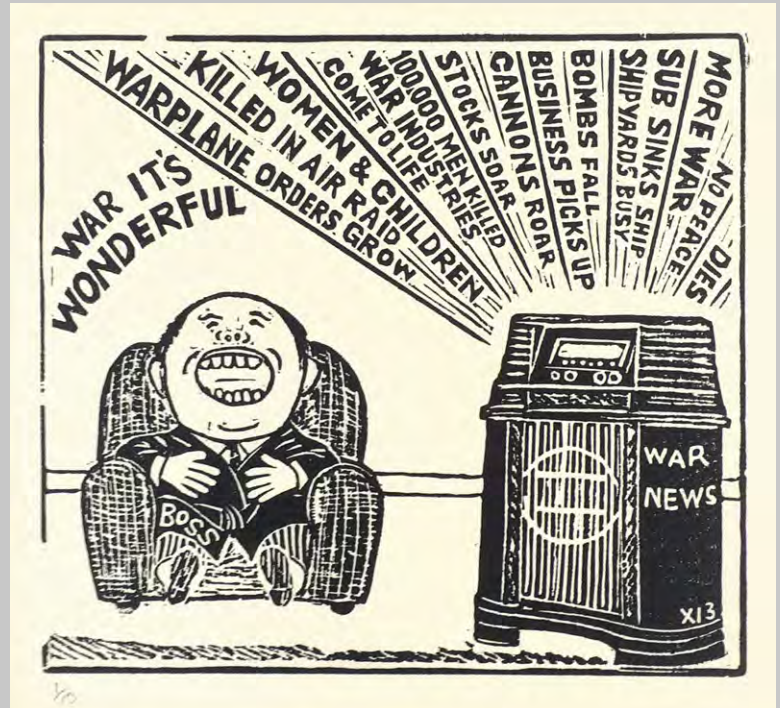
Medium: Relief

Size: block: 6.5 x 6", sheet: 10 x 10.5"

Year: block ca. 1940, restrike 1991

Inventory: 1/10

IWW Wobbly Blocks from the collection of Carlos Cortez re-printed for Rebel Graphics: IWW Prints from the 1940s, exhibit at Anchor Graphics, 1991.



Artist: **IWW Wobbly Artist, X13**

Title: **War Wench**

Medium: Relief

Size: block: 6 x 4", sheet: 8.5 x 6"

Year: block ca. 1940, restrike 1991

Inventory: 1 Trial Proof

IWW Wobbly Blocks from the collection of Carlos Cortez re-printed for Rebel Graphics: IWW Prints from the 1940s, exhibit at Anchor Graphics, 1991.



Artist: **IWW Wobbly Artist, CE Setzer**

Title: **Wage System**

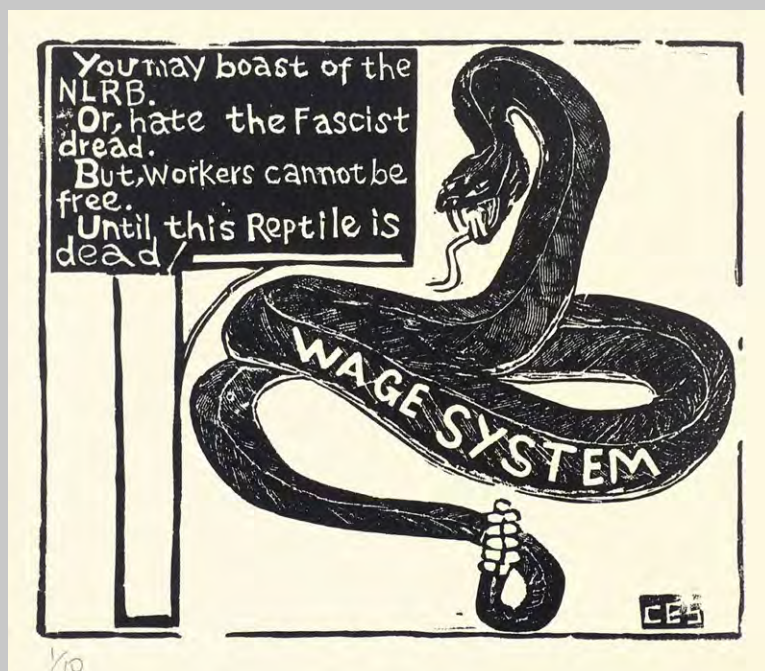
Medium: Relief

Size: block: 6.5 x 6", sheet: 10 x 10.5"

Year: block ca. 1940, restrike 1991

Inventory: 2 Total
1, 5/10

IWW Wobbly Blocks from the collection of Carlos Cortez re-printed for Rebel Graphics: IWW Prints from the 1940s, exhibit at Anchor Graphics, 1991.



Artist: **IWW Wobbly Artist, Unknown**

Title: **Ship Yard**

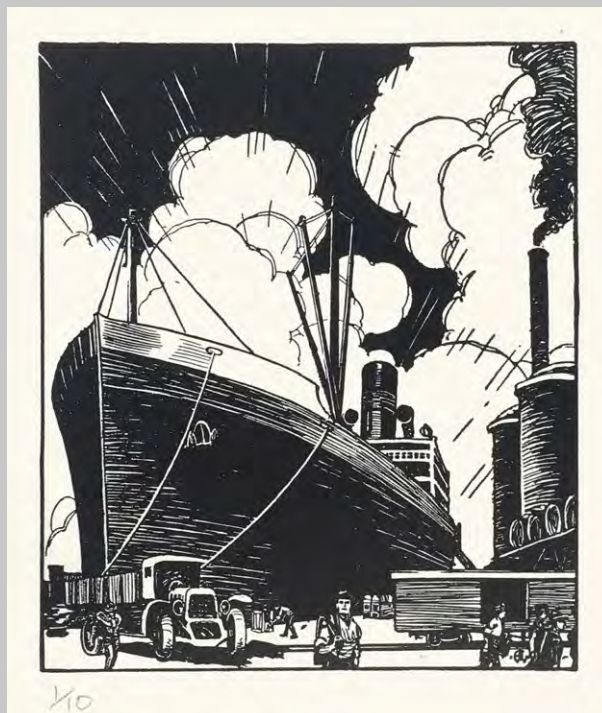
Medium: Relief

Size: block: 5.5 x 5", sheet: 10.5 x 9.5"

Year: block ca. 1940, restrike 1991

Inventory: 1/10

IWW Wobbly Blocks from the collection of Carlos Cortez re-printed for Rebel Graphics: IWW Prints from the 1940s, exhibit at Anchor Graphics, 1991.



Artist: **IWW Wobbly Artist, Unknown**

Title: ***Labor Faker***

Medium: Relief

Size: block: 6.5 x 6", sheet: 10 x 10.5"

Year: block ca. 1940, restrike 1991

Inventory: 2 Total
1, 9/10

IWW Wobbly Blocks from the collection of Carlos Cortez re-printed for Rebel Graphics: IWW Prints from the 1940s, exhibit at Anchor Graphics, 1991.



Artist: **IWW Wobbly Artist, Unknown**

Title: ***May Day***

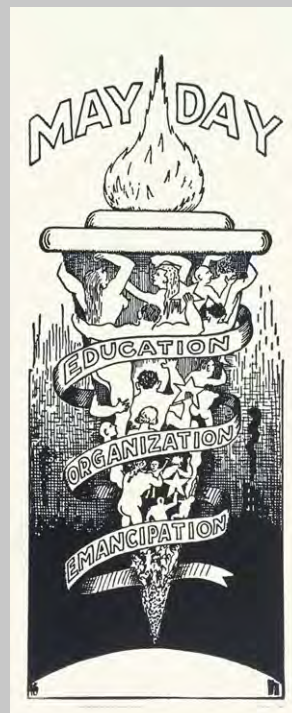
Medium: Relief

Size: block: 10.75 x 4.25", sheet: 15 x 9"

Year: block ca. 1940, restrike 1991

Inventory: 2 Proofs

IWW Wobbly Blocks from the collection of Carlos Cortez re-printed for Rebel Graphics: IWW Prints from the 1940s, exhibit at Anchor Graphics, 1991.



Artist: **IWW Wobbly Artist, Unknown**

Title: ***Pig Rider***

Medium: Relief

Size: block: 6.5 x 6", sheet: 10 x 10.5"

Year: block ca. 1940, restrike 1991

Inventory: 2 Total
1, 10/10

IWW Wobbly Blocks from the collection of Carlos Cortez re-printed for Rebel Graphics: IWW Prints from the 1940s, exhibit at Anchor Graphics, 1991.



Artist: **Teresa James**

Title: ***Far Away Eyes***

Medium: Etching

Size: plate: 4 x 5", sheet: 10 x 11"

Year: 1998

Inventory: 2/5

Donated by the Artist



Artist: **Teresa James**

Title: ***Pious and True***

Medium: Lithograph

Size: 18.75 x 14"

Year: 1999

Inventory: 8 total (1, 5, 13, 15, 17, 19, 23, 25/28)

Published by Anchor Graphics



Artist: **Luis Jiminez**

Title: ***Death on Horseback or "Talaca A Caba"***

Medium: Lithograph

Size: image: 22 x 28", sheet: 30 x 36

Year: 1993

Inventory: SOLD OUT
2 Handling Proofs (minor damage)

Published by Anchor Graphics



Artist: **Anita Jung**

Title: ***Sound of an Unspoken Word***

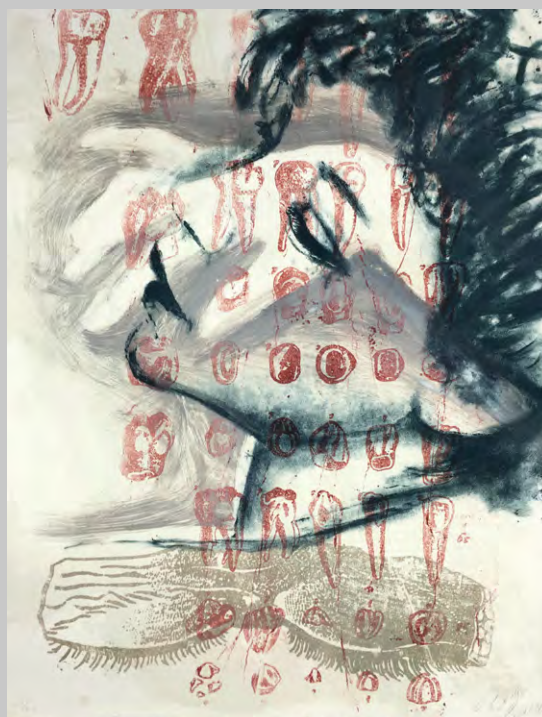
Medium: Lithograph and Monotype

Size: 17 x 22.25"

Year: 1993

Inventory: 4 total
2, 6, 9, 20/25 (variable edition)

Published by Anchor Graphics



Artist: **Terry Karpowicz**

Title: ***Galmachos***

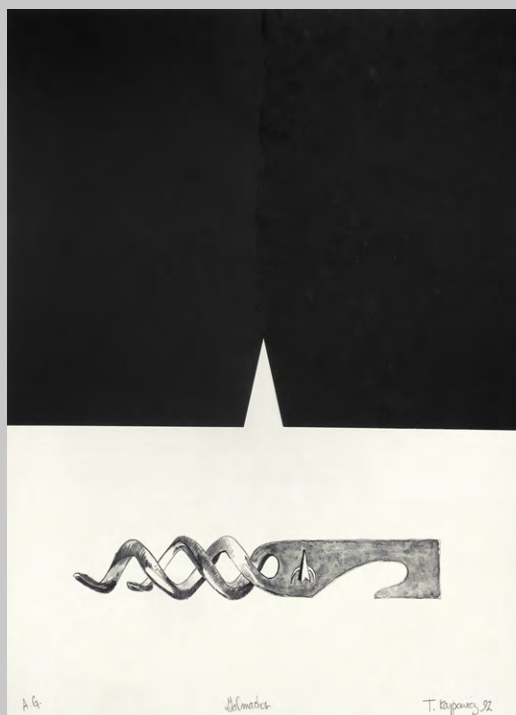
Medium: Lithograph with Chine Colle

Size: 22 x 30"

Year: 1992

Inventory: 3 AG Proofs

Contract Project Published by the Artist



Artist: **Roland Kulla**

Title: ***Air Liner***

Medium: Woodcut

Size: image: 16 x 16", sheet: 22 x 22.5"

Year: 2004

Inventory: 2 AG Proofs

Contract Project Published by the Artist



Artist: **Roland Kulla**

Title: ***Ashland***

Medium: Woodcut

Size: image: 17 x 17", sheet: 22.5 x 22.5"

Year: 2004

Inventory: 2 AG Proofs

Contract Project Published by the Artist



Artist: **Roland Kulla**

Title: **Webster # 1**

Medium: Woodcut

Size: image: 24 x 18, sheet: 27 x 21"

Year: 2004

Inventory: 1 AG proof

Contract Project Published by the Artist



Artist: **Roland Kulla**

Title: **Webster # 2**

Medium: Woodcut

Size: image: 24 x 18, sheet: 27 x 21"

Year: 2004

Inventory: 1 AG proof

Contract Project Published by the Artist



Artist: **Roland Kulla**

Title: **Webster # 3**

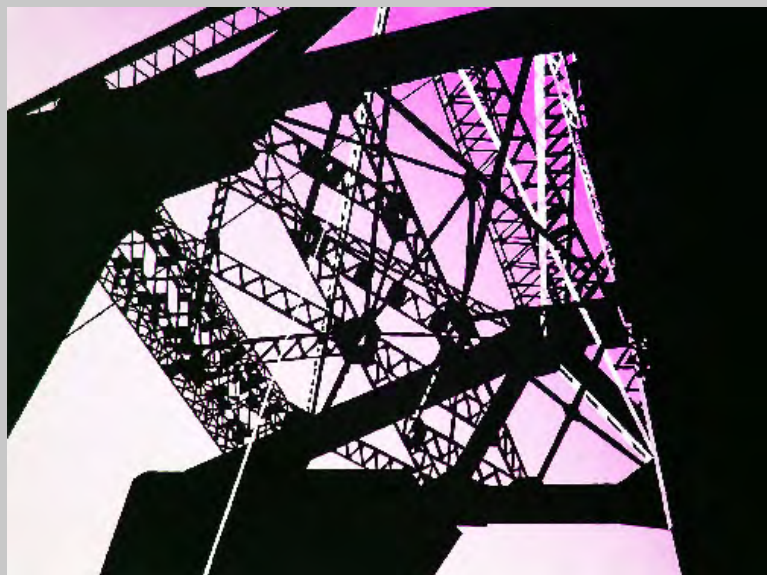
Medium: Woodcut

Size: image: 24 x 18, sheet: 27 x 21"

Year: 2004

Inventory: 1 AG proof

Contract Project Published by the Artist



Artist: **Roland Kulla**

Title: **Webster # 4**

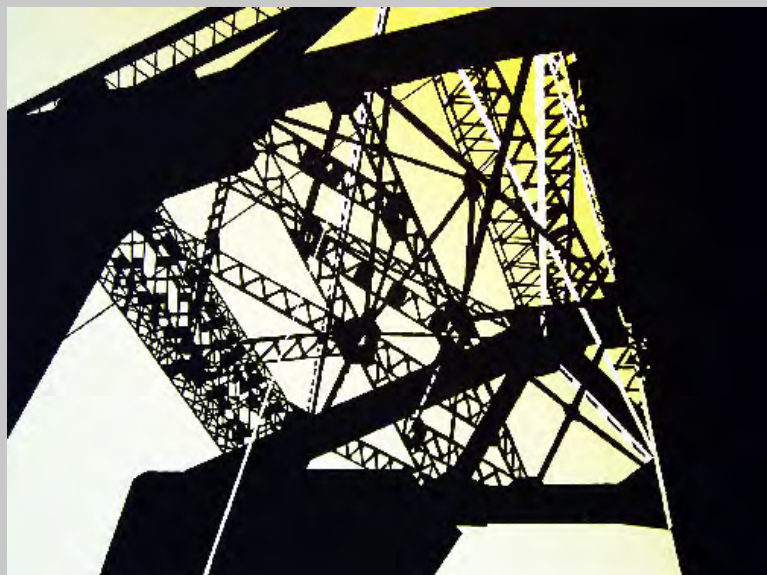
Medium: Woodcut

Size: image: 24 x 18, sheet: 27 x 21"

Year: 2004

Inventory: 1 AG proof

Contract Project Published by the Artist



Artist: **Roland Kulla**

Title: ***Kinzie***

Medium: Lithograph

Size: image: 20 x 20", sheet: 22.5 x 23.5"

Year: 2005

Inventory: 6 AG Proofs

Contract Project Published by the Artist



Artist: **Paul Lamantia**

Title: ***Wasteland***

Medium: Lithograph

Size: 11 x 15"

Year: 2015

Inventory: 4 AG Proofs

Contract Project Published by the Artist for The
Ukrainian Institute of Modern Art



Artist: **Ellen Lanyon**

Title: ***Beyond the Borders***

Medium: Lithograph

Size: 20.5 x 15"

Year: 1997

Inventory: 14 total
12 Edition (1,4,8,12,15,16,18,20,22,24,25,30)
2 AG Proofs

Published by Anchor Graphics



Artist: **Ellen Lanyon**

Title: ***Red Alert***

Medium: Etching

Size: plate: 4 x 5", sheet: 10 x 11"

Year: 1998

Inventory: 3 total
3 edition (7, 8, 10/10)

Published by Anchor Graphics



Artist: **Ellen Lanyon**

Title: ***Poyet***

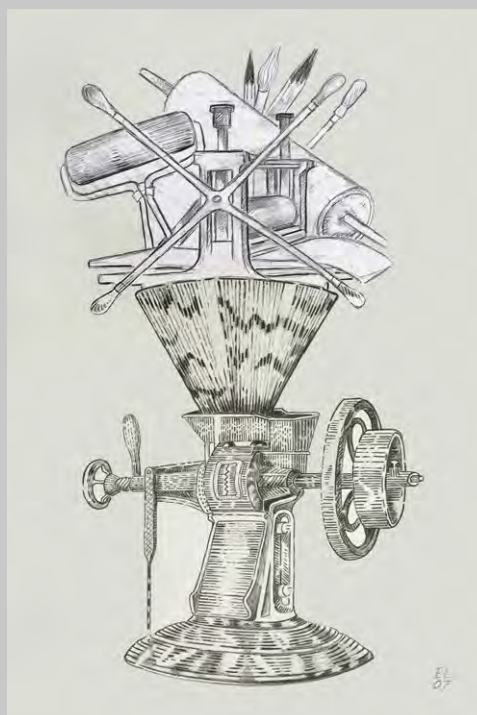
Medium: Lithograph and Collage

Size: 22 x 15"

Year: 2006

Inventory: 3 Unique Impressions

Contract Project Published by the Artist



Artist: **Julio Larraz**

Title: ***Voice of the Turtle***

Medium: Lithograph

Size: image: 22.25 x 30, sheet: 29.5 x 37"

Year: 1992

Inventory: SOLD OUT (No viewing copies available)

Contract Project Published by the Artist



Artist: **Mike Lash**

Title: ***Medusa As A Young Child***

Medium: Lithograph

Size: 15 x 18.5"

Year: 1998

Inventory: 2 AG Proofs

Contract Project Published by the Artist



Artist: **Louise Le Bourgeois**

Title: ***Three Stones***

Medium: Etching

Size: plate: 4.75 x 4.75", sheet: 10.75 x 11.25"

Year: 2002

Inventory: 18 total
8 edition (26/40 - 40/40 even #s)
8 AG Proofs

Published by Anchor Graphics



Artist: **Leonard Lehrer**

Title: ***Dialougue I***

Medium: Lithograph

Size: 30 x 40"

Year: 2006

Inventory: 2 total
2/10
1 AG Proof

Contract Project Published by the Artist



Artist: **Leonard Lehrer**

Title: ***Dialougue IV***

Medium: Lithograph

Size: 30 x 40"

Year: 2006

Inventory: 2 total
2/10
1 AG Proof

Contract Project Published by the Artist



Artist: **Leonard Lehrer**

Title: ***Dialougue III***

Medium: Lithograph

Size: 30 x 40"

Year: 2006

Inventory: 2 total
2/10
1 AG Proof

Contract Project Published by the Artist



Artist: **Leonard Lehrer**

Title: ***Dialougue II***

Medium: Lithograph

Size: 30 x 40"

Year: 2006

Inventory: 2 total
2/10
2 AG Proof

Contract Project Published by the Artist



Artist: **Leonard Lehrer**

Title: ***Cythera***

Medium: Lithograph

Size: image: 7 x 10", sheet: 11 x 13.5"

Year: 2008

Inventory: 4 AG Proofs

Contract Project Published by the Artist



Artist: **Luba Lukova**

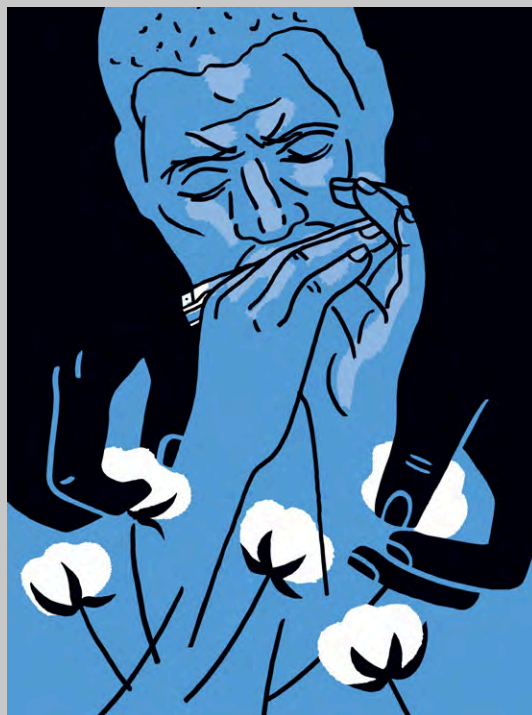
Title: ***Delta Blues***

Medium: Lithograph

Size: image: 12 3/4 x 18", sheet: 15 x 21 1/4"

Year: 2012

Inventory: 16 total
9 edition (4/20-20/20 even #s)
3 AG Proofs
1 CC Proof
3 Printer's Proofs
Published by Anchor Graphics
A+D Visiting Artist 2012



Artist: **Deborah Maris Lader**

Title: ***Machine***

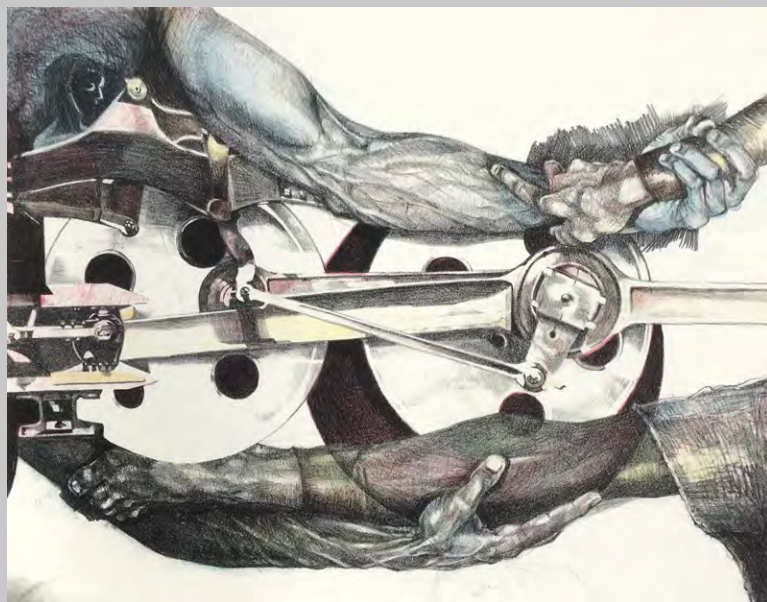
Medium: Lithograph

Size: image:14.5 x 18.75", sheet: 22.24 x 25.5"

Year: 1991

Inventory: 1 AG Proof

Contract Project printed in part as exchange for use of Chicago Printmaker's Collaborative facilities on the first Anchor edition (Paul Sierra)



Artist: **Kerry James Marshall**

Title: ***Brownie***

Medium: Lithograph

Size: 19.75 x 15"

Year: 1995

Inventory: SOLD OUT
(Last known print on display in the Resource Center CCC)

Published by Anchor Graphics



Artist: **Brenda Moore**

Title: ***Upon Turning Age 7***

Medium: Photopolymer Intaglio

Size: plate:12.5 x 10.5", sheet: 19 x 15

Year: 2016

Inventory: 1 AG Proof

Contract Project Published by the Artist



Artist: **Brenda Moore**

Title: ***Swimming, Always Swimming***

Medium: Lithograph

Size: image:10.5 x 14", sheet: 18 x 20"

Year: 2016

Inventory: 3 AG Proofs

Contract Project Published by the Artist



Artist: **Brenda Moore**

Title: ***The Misunderstood Energy of Jetta***

Medium: Lithograph

Size: image:16.5 x 21.5", sheet: 22.5 x 28"

Year: 2016

Inventory: RTP

Contract Project Published by the Artist



Artist: **Audrey Niffenegger**

Title: ***untitled***

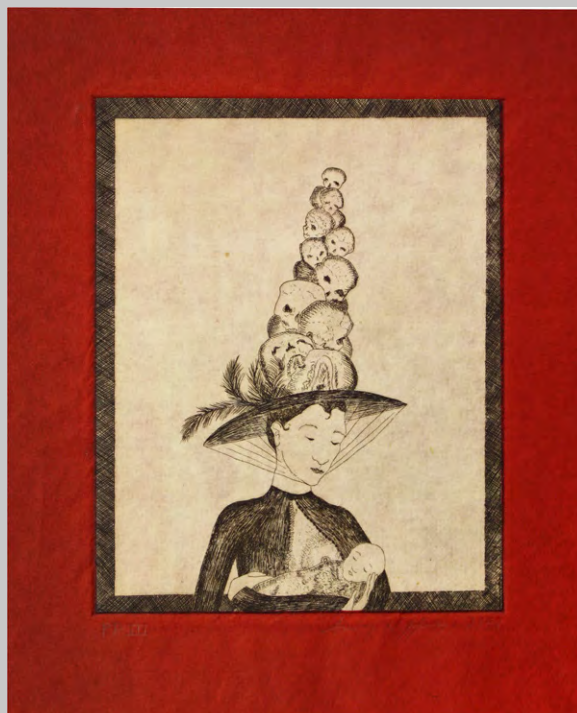
Medium: Etching with Chine Colle

Size: plate: 5 x 4", sheet: 12.25 x 9.25

Year: 1998

Inventory: SOLD OUT
(No viewing impressions available)

Published by Anchor Graphics



Artist: **Rachel Niffenegger**

Title: ***Teeth Toucher in Spiraling Aura***

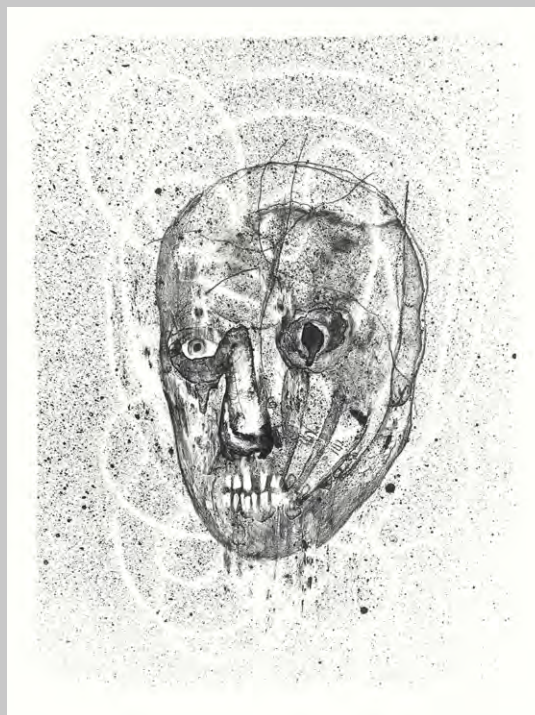
Medium: Lithograph

Size: image: 8.5 x 11.5", sheet: 15 x 19"

Year: 2011

Inventory: 11 total
8 edition (5/20 - 19/20 odd #s)
3 AG Proofs

Published by Anchor Graphics



Artist: **Rachel Niffenegger**

Title: ***Death Mask Pentimento***

Medium: Lithograph

Size: 15.25 x 22"

Year: 2011

Inventory: 14 total
9 edition (3/20 - 19/20 odd #s)
5 AG Proofs

Published by Anchor Graphics



Artist: **Gladys Nilsson**

Title: ***The Happy Painter***

Medium: Etching with Chine Colle

Size: plate: 4 x 5", sheet: 10 x 11"

Year: 1998

Inventory: SOLD OUT
(No viewing copies available)

Published by Anchor Graphics



Artist: **Gladys Nilsson**

Title: ***Ragatta***

Medium: Lithograph

Size: image: 12.25 x 17.5"

Year: 2010

Inventory: SOLD OUT

Contract Project Published by The Flint Cultural
Center, FIA Print Society



Artist: **Jim Nutt**

Title: ***Tweed***

Medium: Lithograph

Size: 13 x 13"

Year: 2005

Inventory: SOLD OUT

Contract Project Co-published by the Artist and
The Mary and Leigh Block Museum of Art



Artist: **Onsmith**

Title: ***Workman's Comp***

Medium: Lithograph

Size: image: 15 3/4 x 10 3/4", sheet: 19 1/4 x 15"

Year: 2010

Inventory: 10 total
5 edition (11, 13, 15, 17, 19/20)
3 AG Proofs
2 CC Proofs

Alumni Jeremy Smith, Published by Anchor
Graphics



Artist: **Tom Palazzolo**

Title: ***Manifest Disney***

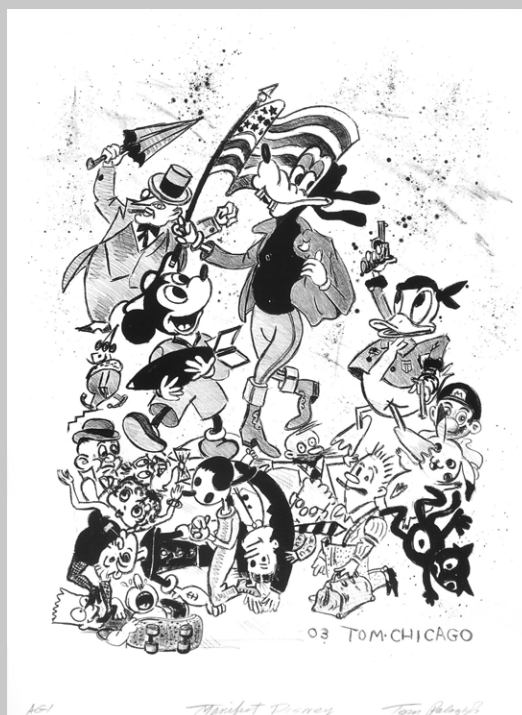
Medium: Lithograph

Size: 18 x 24"

Year: 2003

Inventory: 2 AG Proofs

Contract Project Published by the Artist



Artist: **Ed Paschke**

Title: ***The Kiss***

Medium: Etching

Size: plate: 11.5 x 11.5", sheet: 22.75 x 19.25"

Year: 1997

Inventory: 10 total
7 edition (6, 16, 20, 24 - 30/30)
3 AG Proofs

Published by Anchor Graphics



Artist: **Gordon Powell**

Title: ***Permutation***

Medium: Etching

Size: plate: 10 x 14", sheet: 21 x 31"

Year: 2009

Inventory: 3 AG Proofs

Contract Project Published by Perimeter Gallery



Artist: **Marilyn Propp**

Title: ***In the Brief Transit Where Dreams Cross***

Medium: Etching with Chine Colle

Size: plate: 4 x 5", sheet: 10 x 11"

Year: 1998

Inventory: 6 total
6 edition (3, 4, 6, 8, 9, 10/10)

Published by Anchor Graphics



Artist: **Richard Rezac**

Title: ***Untitled***

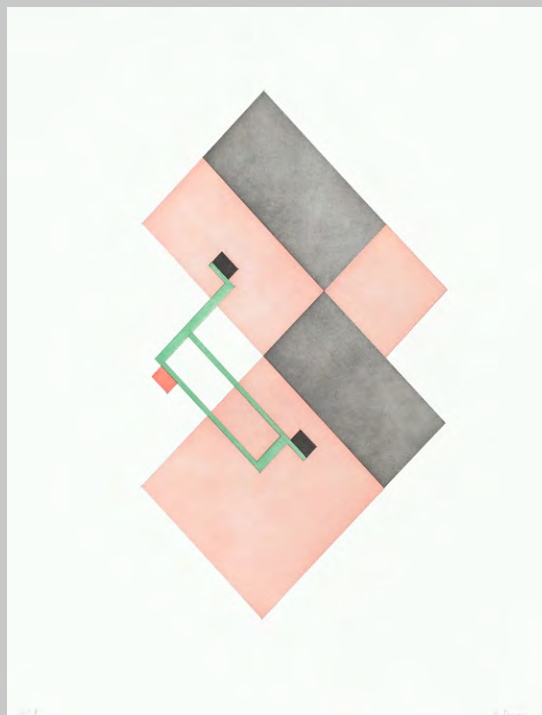
Medium: Etching

Size: 23 x 31"

Year: 2016

Inventory: 1 Printer's Proof

Contract project published by The Cleve Carney
Gallery at The College of Dupage



Artist: **Alejandro Romero**

Title: ***Germinado***

Medium: Lithograph

Size: image: 26 x 36", sheet: 29.5 x 39"

Year: 1990

Inventory: 4 AG Proofs

Contract Project Published by the Artist



Artist: **Kay Rosen**

Title: ***Cut Out***

Medium: Lithograph

Size: 12 x 15"

Year: 1993

Inventory: SOLD OUT

Published by Anchor Graphics



Artist: **Kay Rosen**

Title: ***Go Do Good***

Medium: Silkscreen

Size: image: 22 x 16", sheet: 24 x 18"

Year: 2011

Inventory: 1 signed proof

Contract Project Published by The Chicago Loop
Alliance



Artist: **Kay Rosen**

Title: ***Monuments***

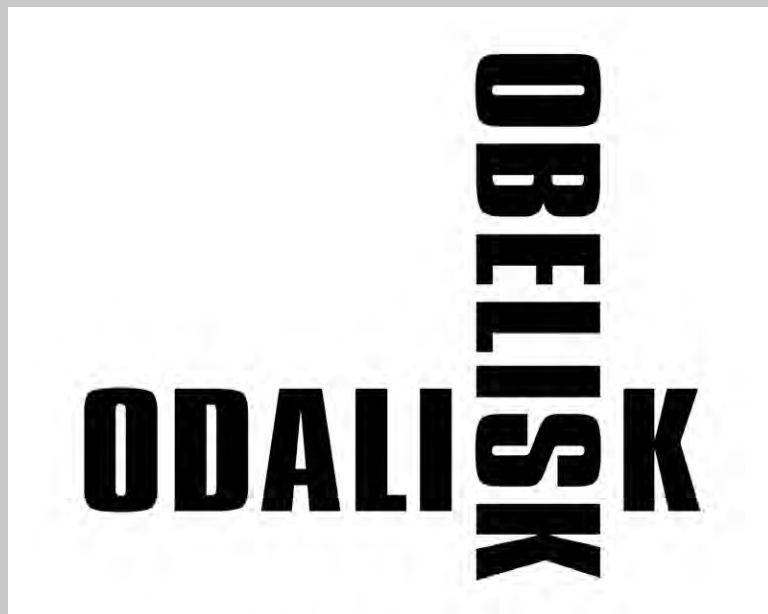
Medium: Silkscreen

Size: 16 x 20"

Year: 2015

Inventory: 4 AG Proofs

Contract Project Published by MIT



Artist: **David Russick**

Title: ***Crest***

Medium: Lithograph with Watercolor

Size: image: 6 x 12", sheet: 10 x 16"

Year: 1991

Inventory: 3 total
2 AG Proofs (1 Blue, 1 Blue-green)
1 Trial Proof (uncolored)

Contract Project Published by the Artist



Artist: **David Russick**

Title: ***Multiple***

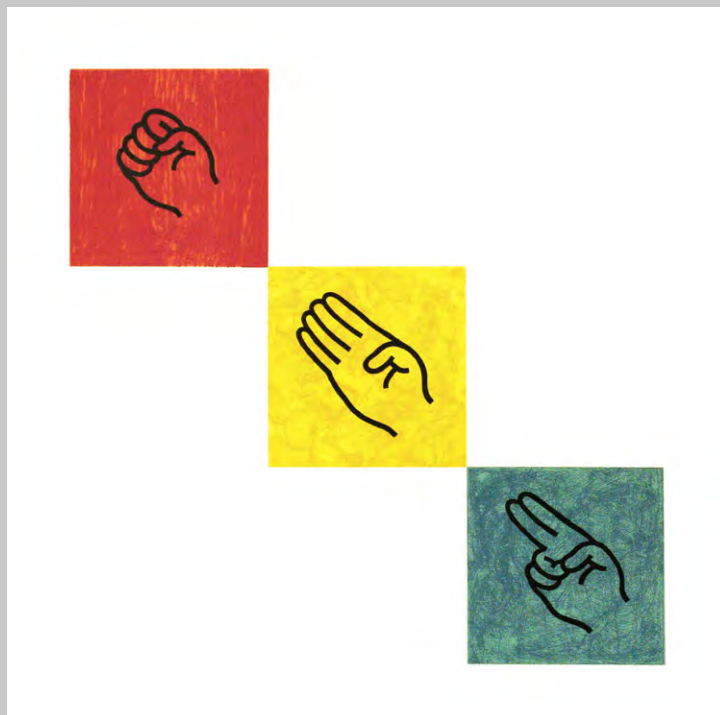
Medium: Lithograph with Relief and Etching

Size: 22.25 x 22.25"

Year: 1993

Inventory: SOLD OUT (No viewing copies available)

Published by Anchor Graphics with Francis and June Speizer



Artist: **David Russick**

Title: ***Impression***

Medium: Lithograph

Size: image: 17.25 x 12", sheet: 20 x 14.75

Year: 1997

Inventory: 2 total
8/30, 22/30

Published by Anchor Graphics



Artist: **Paul Sierra**

Title: ***View From the Shore***

Medium: Lithograph with Hand Coloring

Size: image: 18.5 x 26.75", sheet: 22.25 x 30"

Year: 1990

Inventory: 15 total
12 Edition
(21,22,24,26,28,29,33,34,36,38,39,40)
3 AG Proofs

Published by Anchor Graphics



Artist: **Hollis Sigler**

Title: ***Expect The Unexpected***

Medium: Lithograph

Size: 15.5 x 20.75

Year: 1995

Inventory: 5 total
1 edition (46/50)
3 AG Proofs
1 Trial Proof

Published by Anchor Graphics



Artist: **Brian Sikes**

Title: ***Debit Balance (Minor)***

Medium: Lithograph

Size: image: 20 x 15", sheet: 26.25 x 21.25"

Year: 2002

Inventory: 13 total
10 edition (1/30-19/30, 25/30-29/30, odd #s)
3 AG Proofs

Published by Anchor Graphics



Artist: **Nicholas Sistler**

Title: ***Electrical Storm***

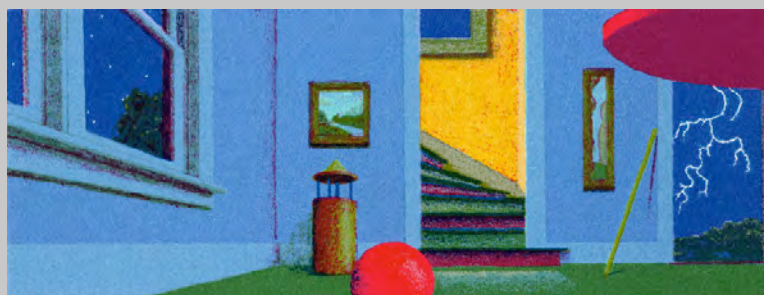
Medium: Lithograph

Size: image: 2 3/8 x 6 1/2", sheet: 6 1/2 x 10 1/8"

Year: 1997

Inventory: SOLD OUT

Contract Project published by the Artist



Artist: **Nicholas Sistler**

Title: ***Story of Billiards***

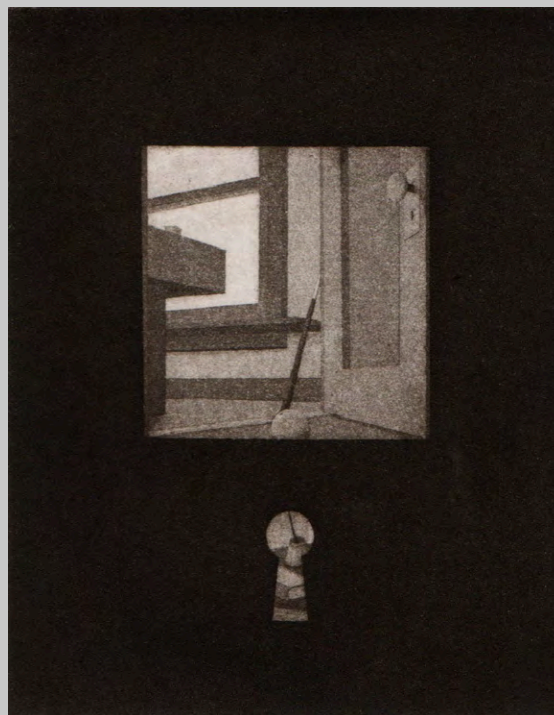
Medium: Etching

Size: plate: 4 x 5", sheet: 10 x 11"

Year: 1998

Inventory: SOLD OUT (No viewing copies available)

Published by Anchor Graphics



Artist: **Nicholas Sistler**

Title: ***View Through Red Door***

Medium: Lithograph

Size: image: 4.5 x 2.5, sheet: 8 x 5.5"

Year: 1999

Inventory: 1 Available (AG9)

Contract Project Published by the Block Museum
at Northwestern University



Artist: **Nicholas Sistler**

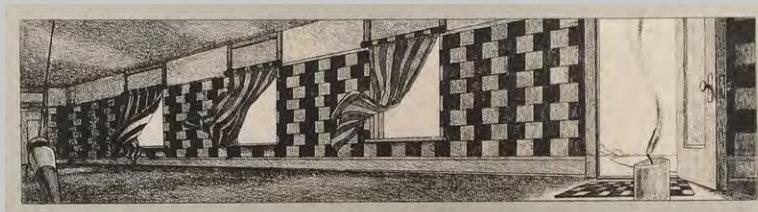
Title: ***Room With a Breeze***

Medium: Lithograph with chine colle

Size: image: 2 x 8" sheet: 6 x 12"

Year: 1999

Inventory: 6 total
AG 3, 4, 5, 6, 7, 8



Contract Project Published by the Artist

Artist: **Nicholas Sistler**

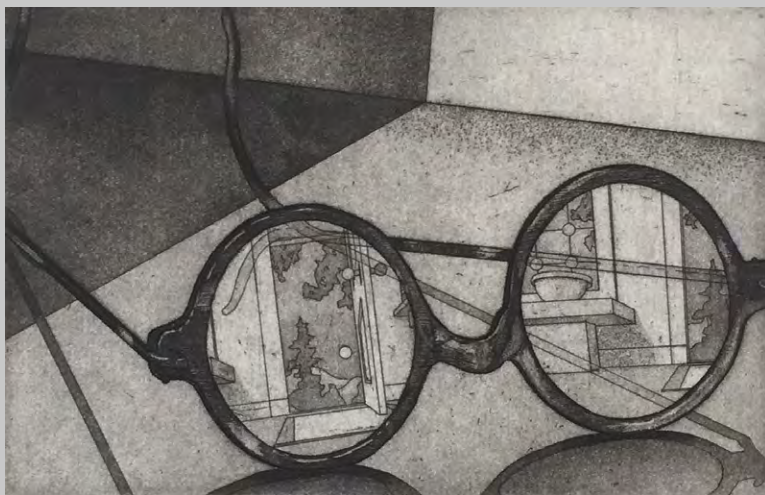
Title: ***Glasses 1***

Medium: Etching

Size: plate: 4 x 5", sheet: 10 x 13"

Year: 2000

Inventory: 3 total
1 AG Proof
2 Trial Proofs



Contract Project Published by the Artist

Artist: **Nicholas Sistler**

Title: **Glasses 2**

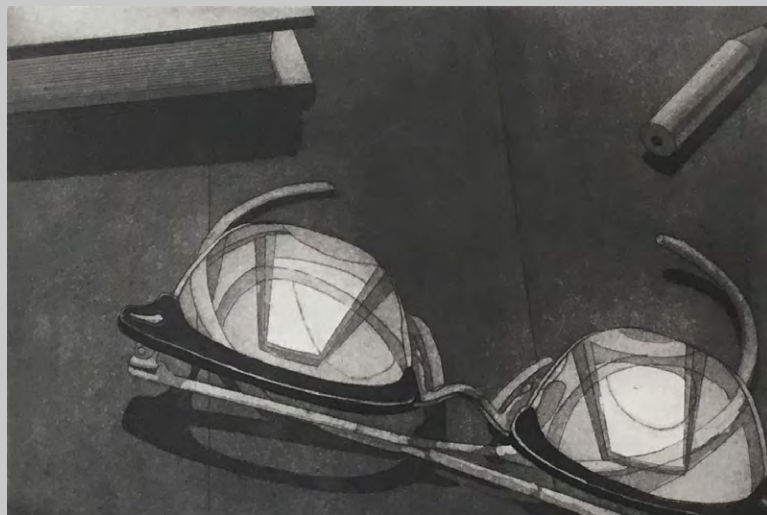
Medium: Etching

Size: plate: 4 x 5", sheet: 10 x 13"

Year: 2000

Inventory: 5 total
3 AG Proofs
2 Trial Proofs

Contract Project Published by the Artist



Artist: **Nicholas Sistler**

Title: **Glasses 3**

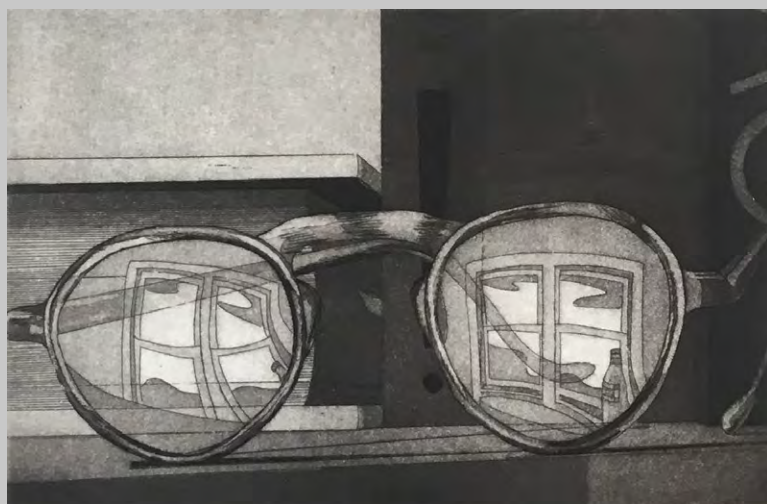
Medium: Etching

Size: plate: 4 x 5", sheet: 10 x 13"

Year: 2000

Inventory: 3 total
3 AG Proofs

Contract Project Published by the Artist



Artist: **Nicholas Sistler**

Title: ***Glasses 4***

Medium: Etching

Size: plate: 4 x 5", sheet: 10 x 13"

Year: 2000

Inventory: 7 total
4 AG Proofs
3 Trial Proofs

Contract Project Published by the Artist



Artist: **Nicholas Sistler**

Title: ***Caught***

Medium: Etching/Aquatint with Lithography

Size: plate: 2.75 x 7.25", sheet: 8.5 x 12.5

Year: 2005

Inventory: 9 total
8 edition (5, 7, 9, 11, 13, 15, 17, 19/20)
1 AG Proof

Co-published by the Artist and Anchor Graphics



Artist: **Nicholas Sistler**

Title: ***Within Earshot***

Medium: Photopolymer Intaglio

Size: plate: 6 x 3", sheet: 10 x 7.25"

Year: 2009

Inventory: 4 AG Proofs (1,3,4,5)



Contract Project Published by the Artist

Artist: **Nicholas Sistler**

Title: ***Vacancy***

Medium: Photopolymer Intaglio

Size: plate: 6 x 3", sheet: 10 x 7.25"

Year: 2009

Inventory: 4 AG Proofs (1,3,4,5)



Contract Project Published by the Artist

Artist: **Nicholas Sistler**

Title: ***Unexpected Invitation***

Medium: Photopolymer Intaglio

Size: plate: 6 x 3", sheet: 10 x 7.25"

Year: 2009

Inventory: 4 AG Proofs (1,3,4,5)



Contract Project Published by the Artist

Artist: **Nicholas Sistler**

Title: ***Secluded Threshold***

Medium: Photopolymer Intaglio

Size: plate: 6 x 3", sheet: 10 x 7.25"

Year: 2009

Inventory: 4 AG Proofs (1,3,4,5)



Contract Project Published by the Artist

Artist: **Nicholas Sistler**

Title: ***Sanctuary***

Medium: Photopolymer Intaglio

Size: plate: 6 x 3", sheet: 10 x 7.25"

Year: 2009

Inventory: 4 AG Proofs (1,3,4,5)



Contract Project Published by the Artist

Artist: **Nicholas Sistler**

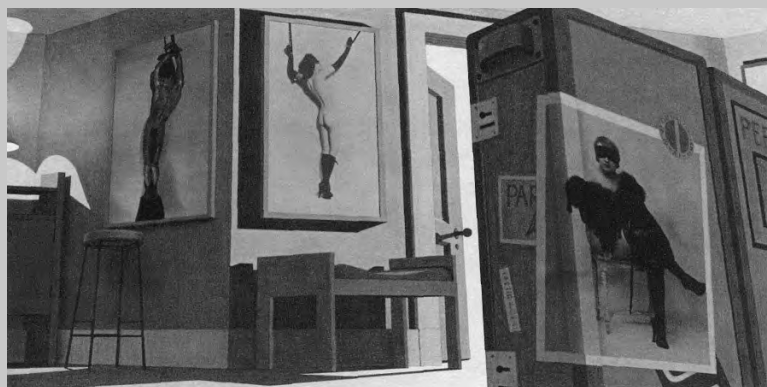
Title: ***RSVP***

Medium: Photopolymer Intaglio

Size: plate: 6 x 3", sheet: 10 x 7.25"

Year: 2009

Inventory: 4 AG Proofs (1,3,4,5)



Contract Project Published by the Artist

Artist: **Nicholas Sistler**

Title: ***Oasis***

Medium: Photopolymer Intaglio

Size: plate: 6 x 3", sheet: 10 x 7.25"

Year: 2009

Inventory: 4 AG Proofs (1,3,4,5)



Contract Project Published by the Artist

Artist: **Nicholas Sistler**

Title: ***Lodging for the Uninvited***

Medium: Photopolymer Intaglio

Size: plate: 6 x 3", sheet: 10 x 7.25"

Year: 2009

Inventory: 4 AG Proofs (1,3,4,5)



Contract Project Published by the Artist

Artist: **Nicholas Sistler**

Title: ***Hospitality Alcove***

Medium: Photopolymer Intaglio

Size: plate: 6 x 3", sheet: 10 x 7.25"

Year: 2009

Inventory: 4 AG Proofs (1,3,4,5)



Contract Project Published by the Artist

Artist: **Nicholas Sistler**

Title: ***Foyer***

Medium: Photopolymer Intaglio

Size: plate: 6 x 3", sheet: 10 x 7.25"

Year: 2009

Inventory: 4 AG Proofs (1,3,4,5)



Contract Project Published by the Artist

Artist: **Nicholas Sistler**

Title: ***Concierge Apartment***

Medium: Photopolymer Intaglio

Size: plate: 6 x 3", sheet: 10 x 7.25"

Year: 2009

Inventory: 4 AG Proofs (1,3,4,5)



Contract Project Published by the Artist

Artist: **Nicholas Sistler**

Title: ***Chambermaid's Neglect***

Medium: Photopolymer Intaglio

Size: plate: 6 x 3", sheet: 10 x 7.25"

Year: 2009

Inventory: 4 AG Proofs (1,3,4,5)



Contract Project Published by the Artist

Artist: **Nicholas Sistler**

Title: ***Appointment***

Medium: Photopolymer Intaglio

Size: plate: 6 x 3", sheet: 10 x 7.25"

Year: 2009

Inventory: 4 AG Proofs (1,3,4,5)



Contract Project Published by the Artist

Artist: **Nicholas Sistler**

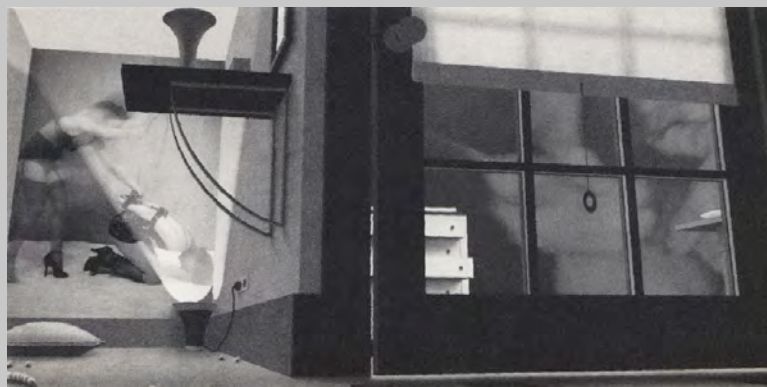
Title: ***Accommodating Enclosure***

Medium: Photopolymer Intaglio

Size: plate: 6 x 3", sheet: 10 x 7.25"

Year: 2009

Inventory: 4 AG Proofs (1,3,4,5)



Contract Project Published by the Artist

Artist: **Nicholas Sistler**

Title: ***Antechamber With Amenities***

Medium: Photopolymer Intaglio

Size: plate: 6 x 3", sheet: 10 x 7.25"

Year: 2009

Inventory: 4 AG Proofs (1,3,4,5)



Contract Project Published by the Artist

Artist: **Nicholas Sistler**

Title: ***Double Indemnity***

Medium: Photo-polymer Intaglio

Size: plate: 4 x 7", sheet: 7.5 x 11

Year: 2010

Inventory: SOLD OUT (No viewing copies available)



Contract Project Published by the Artist for Print
Works Bookplate Exhibit

Artist: **Various Artists**

Title: ***Slated (Portfolio)***

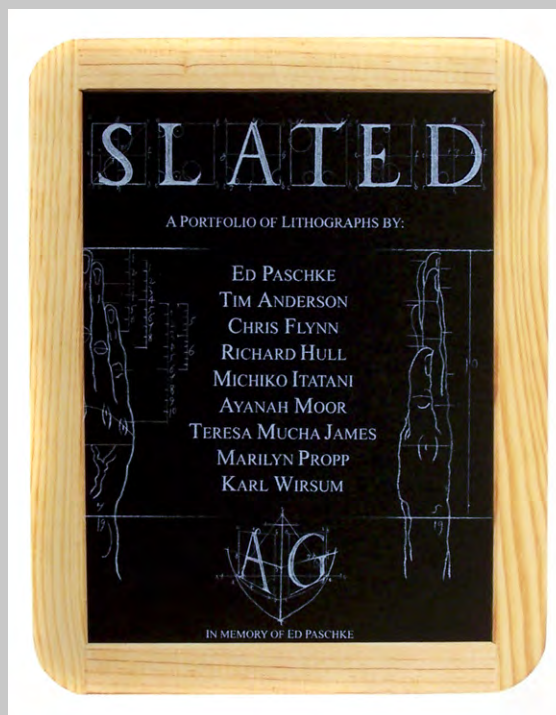
Medium: Lithography

Size: image: 9.25 x 7.25", sheet: 13 x 11.25"

Year: 2005

Inventory: 12 full sets (9-20/20)

Published by Anchor Graphics in collaboration with
Jet Litho



Artist: **Ed Paschke**

Title: ***Slated: Untitled***

Medium: Lithography

Size: image: 9.25 x 7.25", sheet: 13 x 11.25"

Year: 2005

Inventory: 6 total
2 AG Proofs
4 Trial Proofs

Published by Anchor Graphics in collaboration with
Jet Litho



Artist: **Tim Anderson**

Title: ***Slated: Golden Arm***

Medium: Lithography

Size: image: 9.25 x 7.25", sheet: 13 x 11.25"

Year: 2005

Inventory: 3 AG Proofs

Published by Anchor Graphics in collaboration with
Jet Litho



Artist: **Chris Flynn**

Title: ***Slated: Transitory Passage***

Medium: Lithography

Size: image: 9.25 x 7.25", sheet: 13 x 11.25"

Year: 2005

Inventory: 2 AG Proofs

Published by Anchor Graphics in collaboration with
Jet Litho



Artist: **Richard Hull**

Title: ***Slated: Erased***

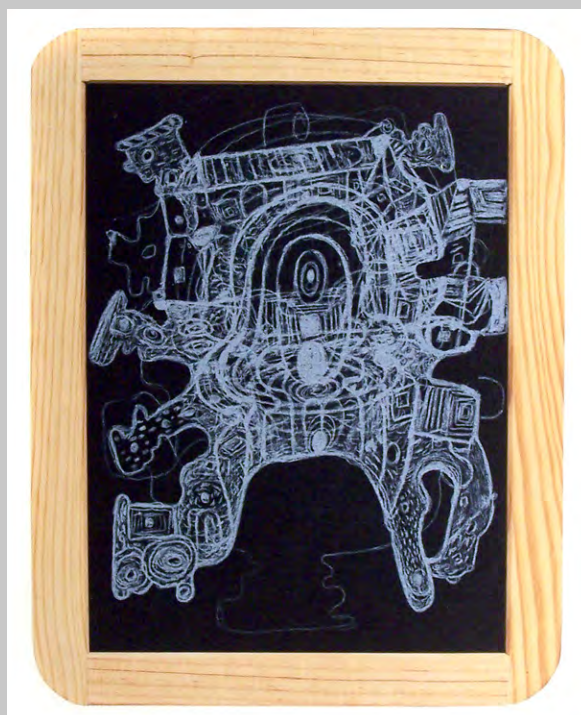
Medium: Lithography

Size: image: 9.25 x 7.25", sheet: 13 x 11.25"

Year: 2005

Inventory: 3 AG Proofs

Published by Anchor Graphics in collaboration with
Jet Litho



Artist: **Michiko Itatani**

Title: ***Slated: Radiant Triage***

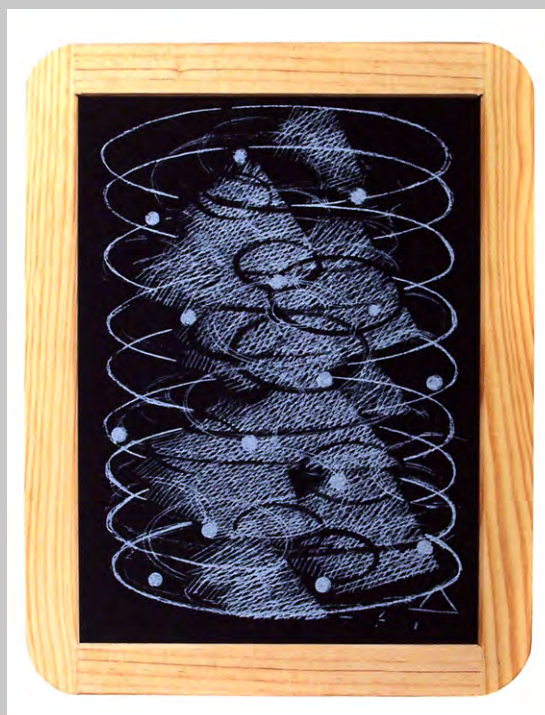
Medium: Lithography

Size: image: 9.25 x 7.25", sheet: 13 x 11.25"

Year: 2005

Inventory: 3 Anchor Graphics Proofs

Published by Anchor Graphics in collaboration with
Jet Litho



Artist: **Teresa James**

Title: ***Slated: What A Wing Does***

Medium: Lithography

Size: image: 9.25 x 7.25", sheet: 13 x 11.25"

Year: 2005

Inventory: 2 AG Proofs

Published by Anchor Graphics in collaboration with
Jet Litho



Artist: **Ayanah Moor**

Title: ***Slated: Burner***

Medium: Lithography

Size: image: 9.25 x 7.25", sheet: 13 x 11.25"

Year: 2005

Inventory: 2 AG Proofs

Published by Anchor Graphics in collaboration with
Jet Litho



Artist: **Marilyn Propp**

Title: ***Slated: From Spin Series***

Medium: Lithography

Size: image: 9.25 x 7.25", sheet: 13 x 11.25"

Year: 2005

Inventory: 3 AG Proofs

Published by Anchor Graphics in collaboration with
Jet Litho



Artist: **Karl Wirsum**

Title: ***Slated: One Up Man***

Medium: Lithography

Size: image: 9.25 x 7.25", sheet: 13 x 11.25"

Year: 2005

Inventory: SOLD OUT. Only available with the full Portfolio

Published by Anchor Graphics in collaboration with
Jet Litho



Artist: **Eleanor Spliss-Ferris**

Title: ***The Life Cycle of the Moth***

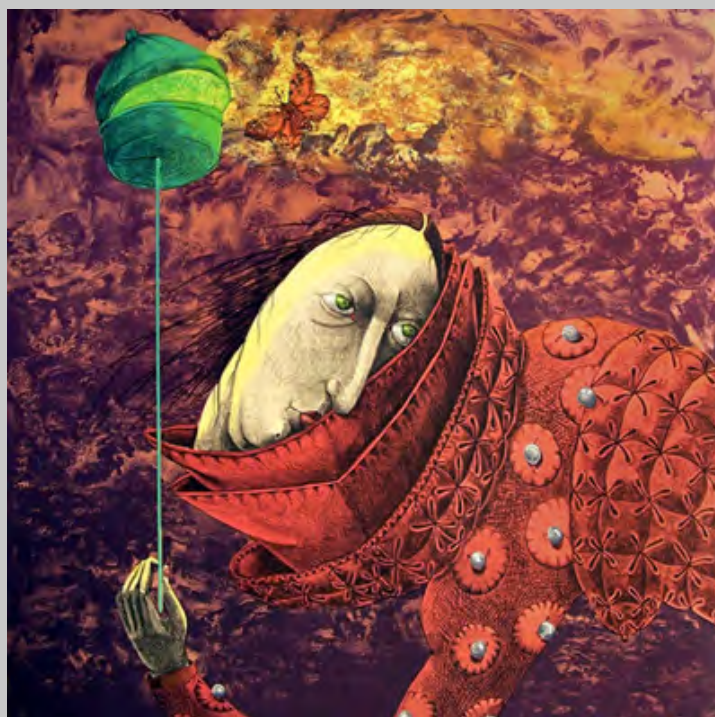
Medium: Lithograph

Size: image: 19 x 19", sheet: 23.5 x 22.5

Year: 2001

Inventory: 17 total
10 Edition (12/30-30/30, even #s)
7 AG Proofs

Published by Anchor Graphics



Artist: **Sagittas Staniunas**

Title: ***Vortex***

Medium: Woodcut

Size: block: 14.5 x 11.75", sheet: 20 x 15"

Year: 1995

Inventory: 2 AG Proofs

Contract Project Published by the Artist



Artist: **Fred Stonehouse**

Title: ***Vertumnus***

Medium: Lithograph

Size: image: 7.25 x 7.25", sheet: 13 x 14.25"

Year: 2009

Inventory: 8 total
8/26, 12-24/26

Published by Anchor Graphics



Artist: **Fred Stonehouse**

Title: ***Shop Goat***

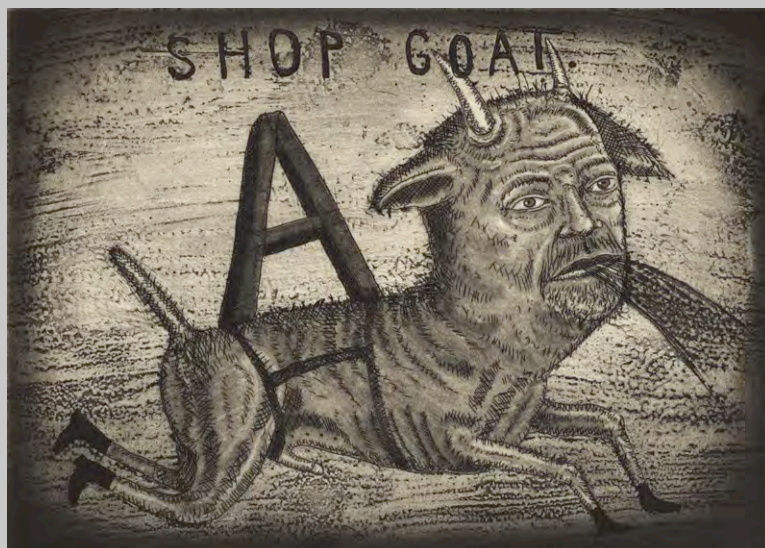
Medium: Etching

Size: plate: 5 x 7", sheet: 12 x 11"

Year: 2009

Inventory: 4 total
6 - 12/14

Published by Anchor Graphics



Artist: **Tony Tasset**

Title: ***Self Portrait As A Surrealist Sculpture***

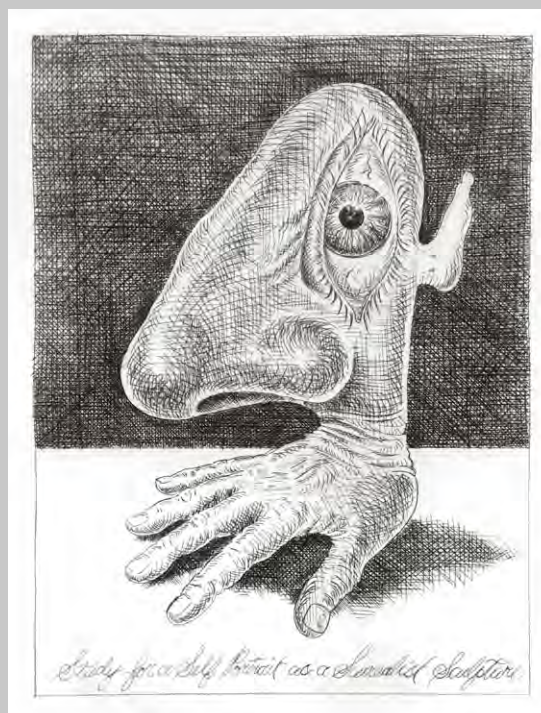
Medium: Etching on Handmade Paper

Size: plate: 10 x 13", sheet: 18 x 24"

Year: 2017

Inventory: 1 AG Proof

Contract project published by The Cleve Carney
Gallery at The College of Dupage



Artist: **Daniel Tisdale**

Title: ***Before and After***

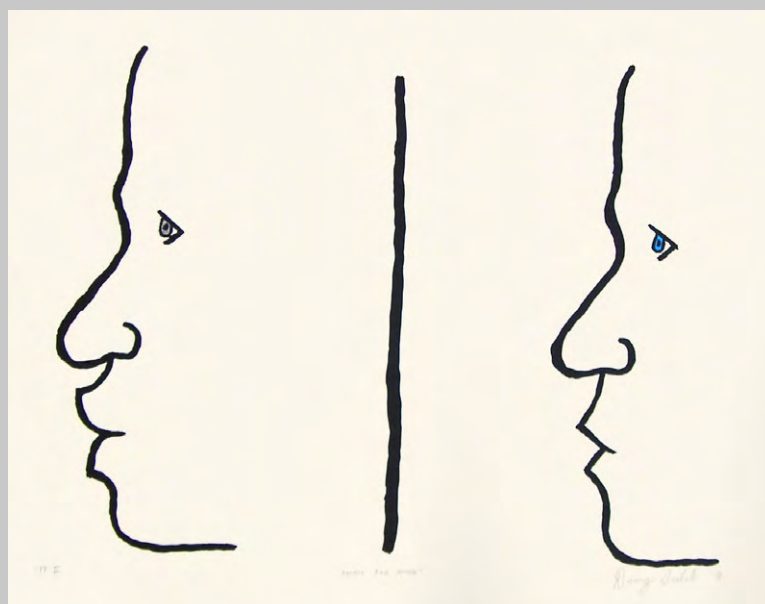
Medium: Lithograph

Size: 18 x 24"

Year: 1991

Inventory: 12 AG Proofs

Contract Project Published by the Artist



Artist: **Annette Turow**

Title: ***Minyan***

Medium: Lithograph

Size: 14 x 14

Year: 2005

Inventory: 3 AG Proofs

Contract Project Published by the Artist



Artist: **Lisa Villa**

Title: ***Hammer War***

Medium: Lithograph

Size: image: 25 x 18", sheet: 30 x 22.25"

Year: 1991

Inventory: 3 AG Proofs

Contract Project Published by the Artist



Artist: **Hubertus von der Goltz**

Title: ***Aus dem Nichts V***

Medium: Lithograph

Size: 22.25 x 30"

Year: 1991

Inventory: 2 AG Proofs

Contract Project Published by the Artist



Artist: **Hubertus von der Goltz**

Title: ***Balance II***

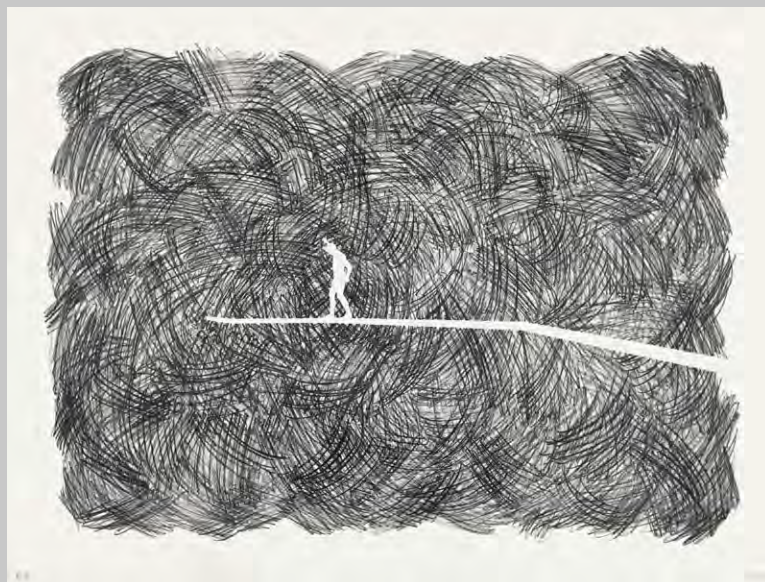
Medium: Lithograph

Size: 22.25 x 30"

Year: 1991

Inventory: 3 AG Proofs

Contract Project Published by the Artist



Artist: **Hubertus von der Goltz**

Title: ***Jerder Fuer Sich VI***

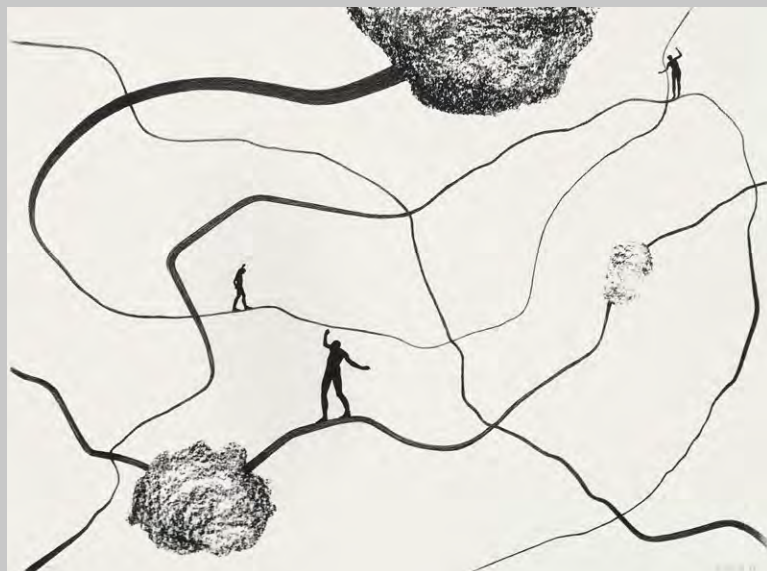
Medium: Lithograph

Size: 22.25 x 30"

Year: 1991

Inventory: 3 AG Proofs

Contract Project Published by the Artist



Artist: **Hubertus von der Goltz**

Title: ***Standpunkte III***

Medium: Lithograph

Size: 22.25 x 30"

Year: 1991

Inventory: 4 AG Proofs

Contract Project Published by the Artist



Artist: **Hubertus von der Goltz**

Title: ***Verwurzelung VII***

Medium: Lithograph

Size: 22.25 x 30"

Year: 1991

Inventory: 2 AG Proofs

Contract Project Published by the Artist



Artist: **Hubertus von der Goltz**

Title: ***Verwurzelung VII***

Medium: Lithograph

Size: 22.25 x 30"

Year: 1991

Inventory: 1 AG Proof

Contract Project Published by the Artist



Artist: **Ian Weaver**

Title: ***Mother***

Medium: Etching

Size: plate: 10 x 10", sheet: 15 x 16 1/4"

Year: 2002

Inventory: 5 AG Proofs

Contract project published by the artist



Artist: **Ian Weaver**

Title: ***Collage***

Medium: Lithograph with blind embossment

Size: 6 x 6"

Year: 2005

Inventory: 3 total
1 AG Proof
2 Trial Proofs

Contract project published by the artist



Artist: **Karl Wirsum**

Title: ***Single Signal***

Medium: Lithograph

Size: 20.5 x 15

Year: 1994

Inventory: SOLD OUT
(No viewing copies available)

Published by Anchor Graphics



Artist: **Karl Wirsum**

Title: ***Flip***

Medium: Etching

Size: plate: 4 x 5", sheet: 10 x 11"

Year: 1998

Inventory: SOLD OUT
(No viewing copies available)

Published by Anchor Graphics



Artist: **Karl Wirsum**

Title: ***Gab Grab***

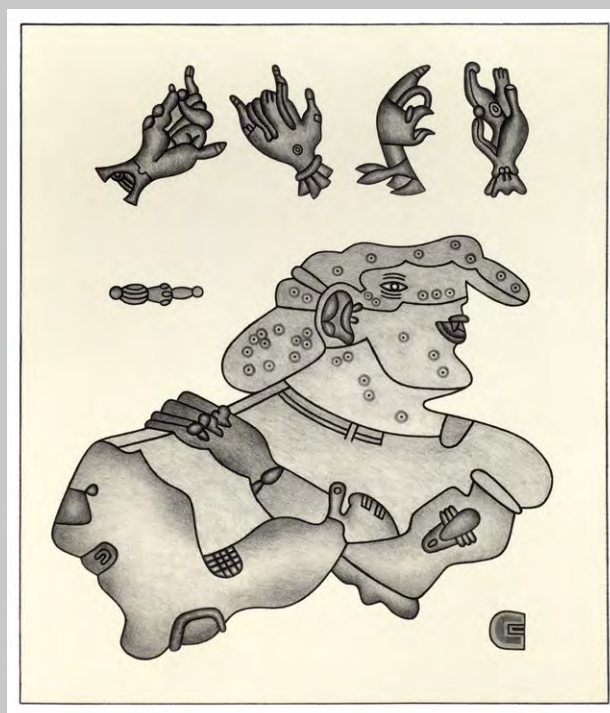
Medium: Lithograph

Size: image: 14.25 x 16.5", sheet: 19.25 x 22"

Year: 2011

Inventory: 10 total
5 edition (12/20 - 20/20 even #s)
3 AG Proofs
2 CC Proofs

Published by Anchor Graphics



Artist: **Saya Woolfalk**

Title: ***A Rosetta Stone of Empathic Movement and Biology***

Medium: Lithograph

Size: 28 x 22"

Year: 2011

Inventory: 9 total
5 edition (12/20-20/20 even #s)
3 AG Proofs
1 CC Proof

Published by Anchor Graphics
A+D Visiting Artist 2011

